

Beyond The Alphabet Sound Cards

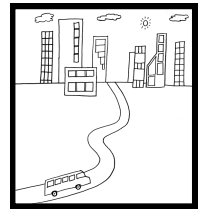
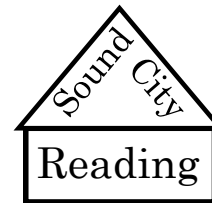
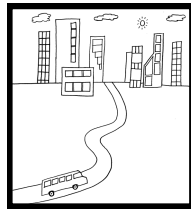
From Part 2 Of The Sound Story

© 2018 by Kathryn J. Davis

Beyond The Alphabet Sound Cards

From Part 2 Of The Sound Story

© 2018 by Kathryn J. Davis



Beyond The Alphabet Sound Cards

From Part 2 Of The Sound Story

© 2018 by Kathryn J. Davis

Beyond The Alphabet Sound Cards

From Part 2 Of The Sound Story

© 2018 by Kathryn J. Davis

Instructions

1. These cards are from Part 2 of the Sound Story. The set includes long vowel sounds ā, ē, ō, ū, dotted vowel sounds ä, ö, ü, consonant digraphs sh, th, ch, ng, and vowel patterns oi /oy, and ou /ow. Although long ī is introduced in Part 1 of the Sound Story it is also included in this set of cards. The last sound from Part 2 does not have a specific letter symbol. It can be heard in the words *measure*, *vision*, *azure*, and *garage*. Students are not yet ready to read these words. The teacher should say the words and have the students repeat.
2. If you wish, you can begin introducing Part 2 of the Sound Story after students have learned all the letters of the alphabet and have begun to read and spell short vowel words. If you prefer, you can wait until you begin *Phonetic Words And Stories, Book 1*, or *Basic Phonics Patterns, Book 1*.
3. To get started, read through Part 2 of the Sound Story, introducing several new sounds per day. Continue until all the patterns have been introduced.
4. Each day, put the cards for the patterns that have been taught and the corresponding Part 2 picture cards in a pocket chart or on a table. Have students match each letter card with the associated picture card.
5. Review the sound cards daily. First, students should see the letter patterns and say the sounds. Then they should hear you dictate the sounds (without seeing the cards) and write the patterns. After students write each pattern, show the card so that they can check and correct their work as needed.

Instructions

1. These cards are from Part 2 of the Sound Story. The set includes long vowel sounds ā, ē, ō, ū, dotted vowel sounds ä, ö, ü, consonant digraphs sh, th, ch, ng, and vowel patterns oi /oy, and ou /ow. Although long ī is introduced in Part 1 of the Sound Story it is also included in this set of cards. The last sound from Part 2 does not have a specific letter symbol. It can be heard in the words *measure*, *vision*, *azure*, and *garage*. Students are not yet ready to read these words. The teacher should say the words and have the students repeat.
2. If you wish, you can begin introducing Part 2 of the Sound Story after students have learned all the letters of the alphabet and have begun to read and spell short vowel words. If you prefer, you can wait until you begin *Phonetic Words And Stories, Book 1*, or *Basic Phonics Patterns, Book 1*.
3. To get started, read through Part 2 of the Sound Story, introducing several new sounds per day. Continue until all the patterns have been introduced.
4. Each day, put the cards for the patterns that have been taught and the corresponding Part 2 picture cards in a pocket chart or on a table. Have students match each letter card with the associated picture card.
5. Review the sound cards daily. First, students should see the letter patterns and say the sounds. Then they should hear you dictate the sounds (without seeing the cards) and write the patterns. After students write each pattern, show the card so that they can check and correct their work as needed.

Instructions

1. These cards are from Part 2 of the Sound Story. The set includes long vowel sounds ā, ē, ō, ū, dotted vowel sounds ä, ö, ü, consonant digraphs sh, th, ch, ng, and vowel patterns oi /oy, and ou /ow. Although long ī is introduced in Part 1 of the Sound Story it is also included in this set of cards. The last sound from Part 2 does not have a specific letter symbol. It can be heard in the words *measure*, *vision*, *azure*, and *garage*. Students are not yet ready to read these words. The teacher should say the words and have the students repeat.
2. If you wish, you can begin introducing Part 2 of the Sound Story after students have learned all the letters of the alphabet and have begun to read and spell short vowel words. If you prefer, you can wait until you begin *Phonetic Words And Stories, Book 1*, or *Basic Phonics Patterns, Book 1*.
3. To get started, read through Part 2 of the Sound Story, introducing several new sounds per day. Continue until all the patterns have been introduced.
4. Each day, put the cards for the patterns that have been taught and the corresponding Part 2 picture cards in a pocket chart or on a table. Have students match each letter card with the associated picture card.
5. Review the sound cards daily. First, students should see the letter patterns and say the sounds. Then they should hear you dictate the sounds (without seeing the cards) and write the patterns. After students write each pattern, show the card so that they can check and correct their work as needed.

Instructions

1. These cards are from Part 2 of the Sound Story. The set includes long vowel sounds ā, ē, ō, ū, dotted vowel sounds ä, ö, ü, consonant digraphs sh, th, ch, ng, and vowel patterns oi /oy, and ou /ow. Although long ī is introduced in Part 1 of the Sound Story it is also included in this set of cards. The last sound from Part 2 does not have a specific letter symbol. It can be heard in the words *measure*, *vision*, *azure*, and *garage*. Students are not yet ready to read these words. The teacher should say the words and have the students repeat.
2. If you wish, you can begin introducing Part 2 of the Sound Story after students have learned all the letters of the alphabet and have begun to read and spell short vowel words. If you prefer, you can wait until you begin *Phonetic Words And Stories, Book 1*, or *Basic Phonics Patterns, Book 1*.
3. To get started, read through Part 2 of the Sound Story, introducing several new sounds per day. Continue until all the patterns have been introduced.
4. Each day, put the cards for the patterns that have been taught and the corresponding Part 2 picture cards in a pocket chart or on a table. Have students match each letter card with the associated picture card.
5. Review the sound cards daily. First, students should see the letter patterns and say the sounds. Then they should hear you dictate the sounds (without seeing the cards) and write the patterns. After students write each pattern, show the card so that they can check and correct their work as needed.

Beyond The Alphabet Sounds

- | | | |
|---------------|--------------|---|
| 1. ī/bison | 11. oi/coins | These two patterns show the same sound. |
| 2. sh/ship | 12. oy/boy | |
| 3. ē/secret | 13. ou/ouch | These two patterns show the same sound. |
| 4. ō/robot | 14. ow/cow | |
| 5. th/thumb | 15. ü/push | This list uses key words to help teachers learn the correct sound for each pattern. When using the sound cards, do not use key words with the students. |
| th/this | 16. ä/all | |
| 6. ö/to | 17. measure | |
| 7. ā/raven | vision | |
| 8. ch/chicken | azure | |
| 9. ng/ring | garage | |
| 10. ū/tulip | | |
| ū/music | | |

Beyond The Alphabet Sounds

- | | | |
|---------------|--------------|---|
| 1. ī/bison | 11. oi/coins | These two patterns show the same sound. |
| 2. sh/ship | 12. oy/boy | |
| 3. ē/secret | 13. ou/ouch | These two patterns show the same sound. |
| 4. ō/robot | 14. ow/cow | |
| 5. th/thumb | 15. ü/push | This list uses key words to help teachers learn the correct sound for each pattern. When using the sound cards, do not use key words with the students. |
| th/this | 16. ä/all | |
| 6. ö/to | 17. measure | |
| 7. ā/raven | vision | |
| 8. ch/chicken | azure | |
| 9. ng/ring | garage | |
| 10. ū/tulip | | |
| ū/music | | |

Beyond The Alphabet Sounds

- | | | |
|---------------|--------------|---|
| 1. ī/bison | 11. oi/coins | These two patterns show the same sound. |
| 2. sh/ship | 12. oy/boy | |
| 3. ē/secret | 13. ou/ouch | These two patterns show the same sound. |
| 4. ō/robot | 14. ow/cow | |
| 5. th/thumb | 15. ü/push | This list uses key words to help teachers learn the correct sound for each pattern. When using the sound cards, do not use key words with the students. |
| th/this | 16. ä/all | |
| 6. ö/to | 17. measure | |
| 7. ā/raven | vision | |
| 8. ch/chicken | azure | |
| 9. ng/ring | garage | |
| 10. ū/tulip | | |
| ū/music | | |

Beyond The Alphabet Sounds

- | | | |
|---------------|--------------|---|
| 1. ī/bison | 11. oi/coins | These two patterns show the same sound. |
| 2. sh/ship | 12. oy/boy | |
| 3. ē/secret | 13. ou/ouch | These two patterns show the same sound. |
| 4. ō/robot | 14. ow/cow | |
| 5. th/thumb | 15. ü/push | This list uses key words to help teachers learn the correct sound for each pattern. When using the sound cards, do not use key words with the students. |
| th/this | 16. ä/all | |
| 6. ö/to | 17. measure | |
| 7. ā/raven | vision | |
| 8. ch/chicken | azure | |
| 9. ng/ring | garage | |
| 10. ū/tulip | | |
| ū/music | | |

ī

1

ī

1

ī

1

ī

1

sh

2

sh

2

sh

2

sh

2

è

3

è

3

è

3

è

3

0

4

0

4

0

4

0

4

th

th

5

5

th

th

5

5

Ö

6

Ö

6

Ö

6

Ö

6

ā

7

ā

7

ā

7

ā

7

ch

ch

8

8

ch

ch

8

8

ng

9

ng

9

ng

9

ng

9

ū

ū

10

10

ū

ū

10

10

oi

oi

oi

oi

oy

12

oy

12

oy

12

oy

12

ou

ou

ou

ou

O W

O W

OW

OW

ü

15

ü

15

ü

15

ü

15

ö

16

ö

16

ä

16

ä

16

measure

vision

azure

garage

17

measure

vision

azure

garage

17

measure

vision

azure

garage

17

measure

vision

azure

garage

17



Fantastic!

You know all of
the Beyond The
Alphabet Sounds.



Fantastic!

You know all of
the Beyond The
Alphabet Sounds.



Fantastic!

You know all of
the Beyond The
Alphabet Sounds.



Fantastic!

You know all of
the Beyond The
Alphabet Sounds.