

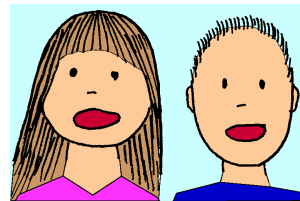
Legal Sized

Alphabet Wall Cards With Sound Pictures

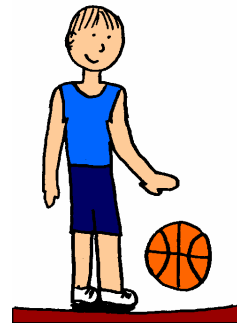
Including The

“Beyond The Alphabet” Sounds

A a



B b

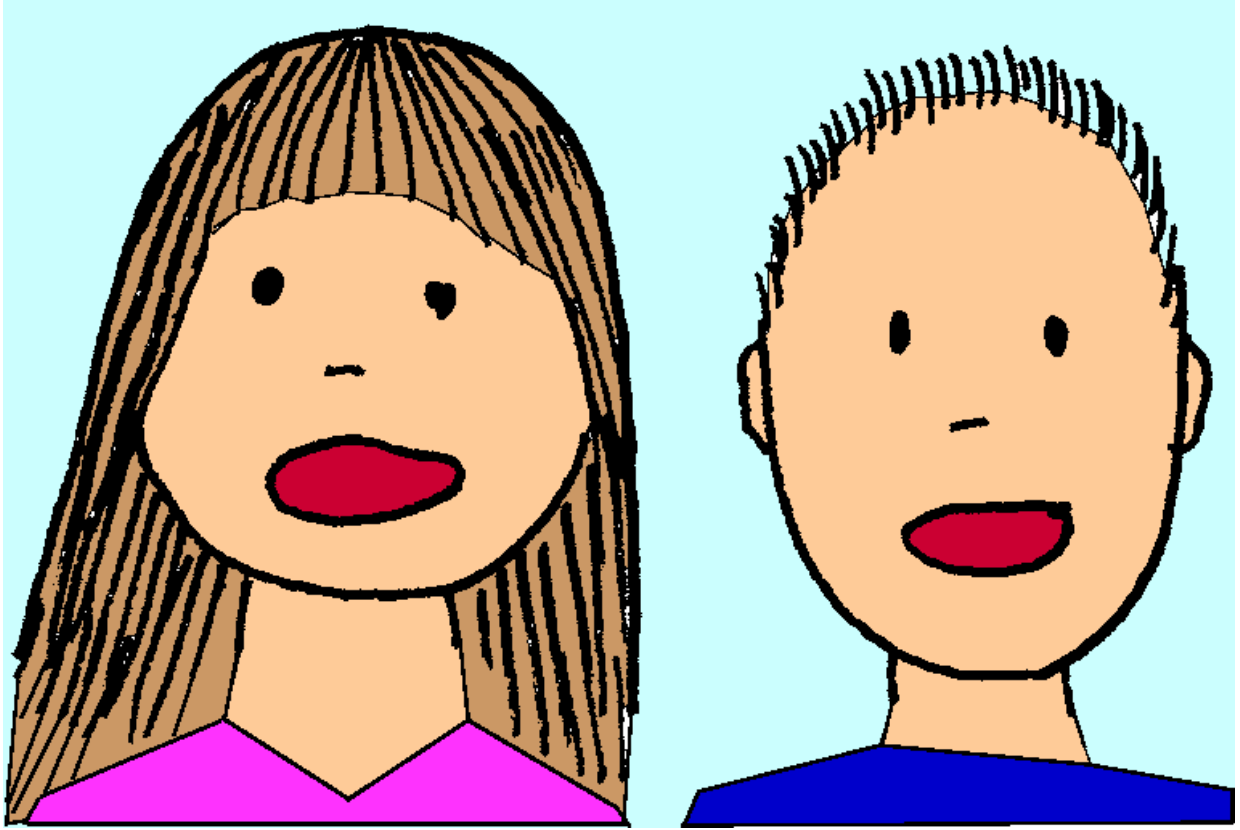


C c



s h





A a

Name Brad

Spelling

A

ground

out

mouth

couch

flour

shout

mountain

loud

—

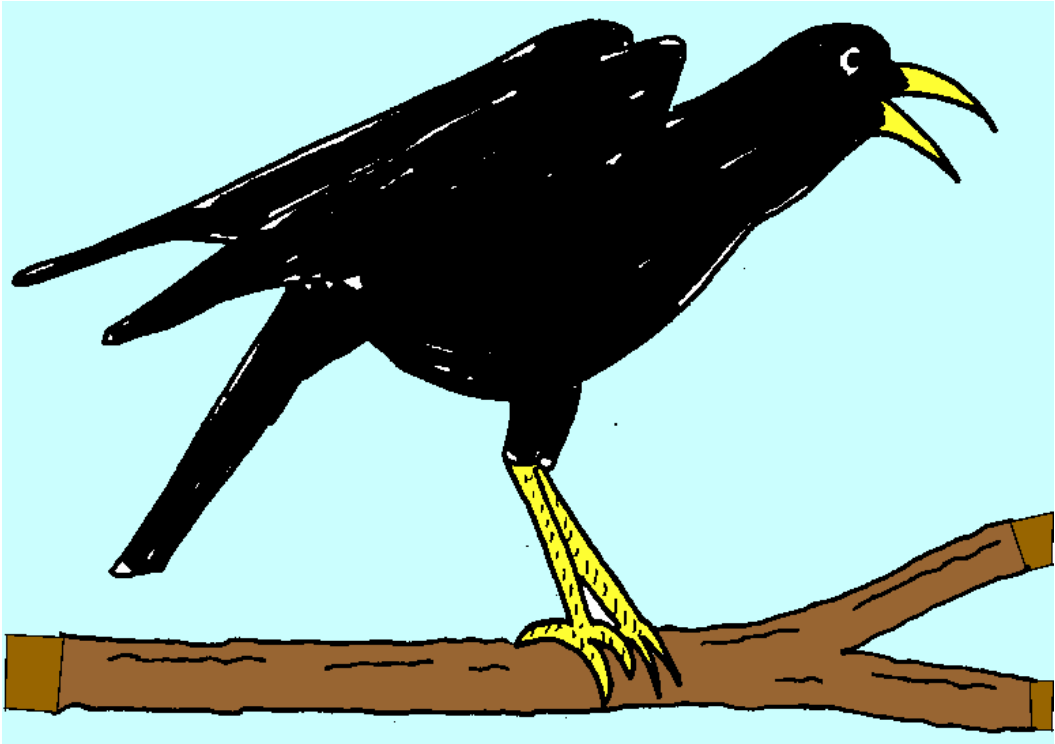
A

ā

ai

ay

a_e



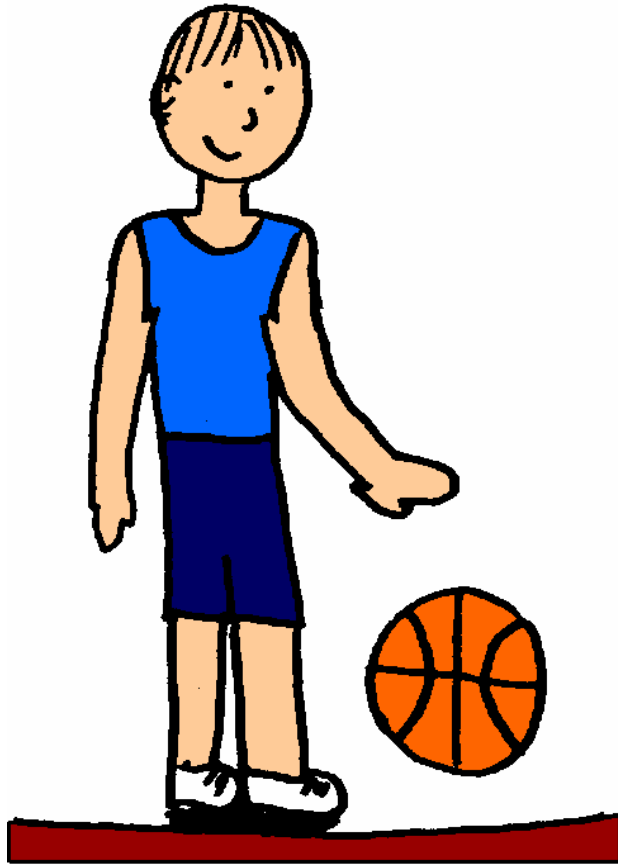
• •

A

ä

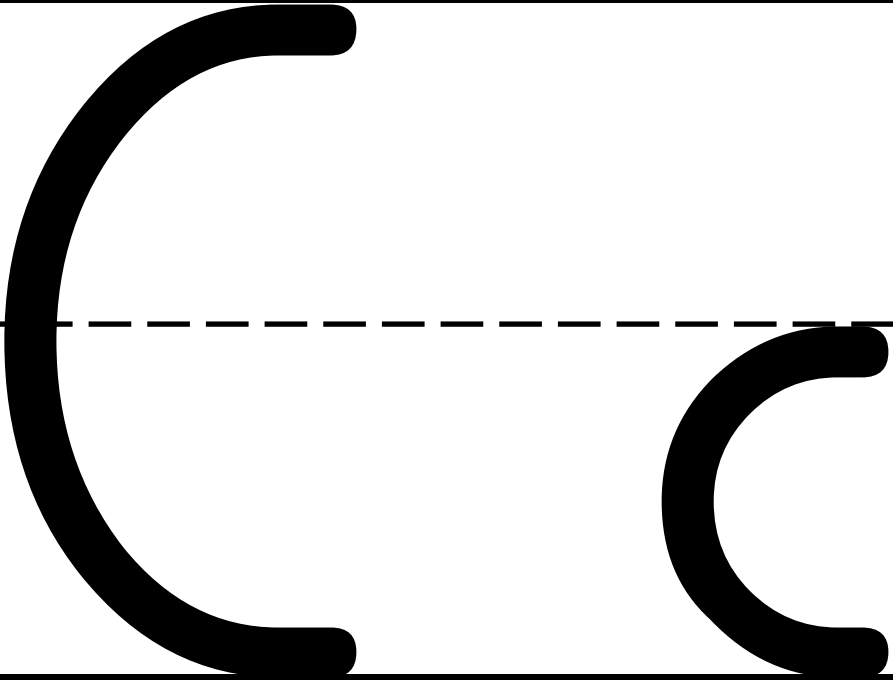
au

aw

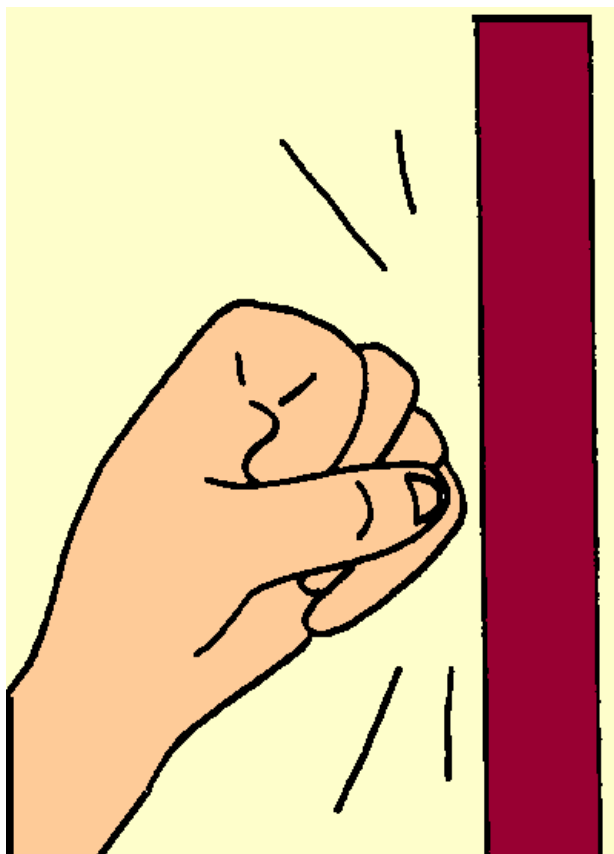


B

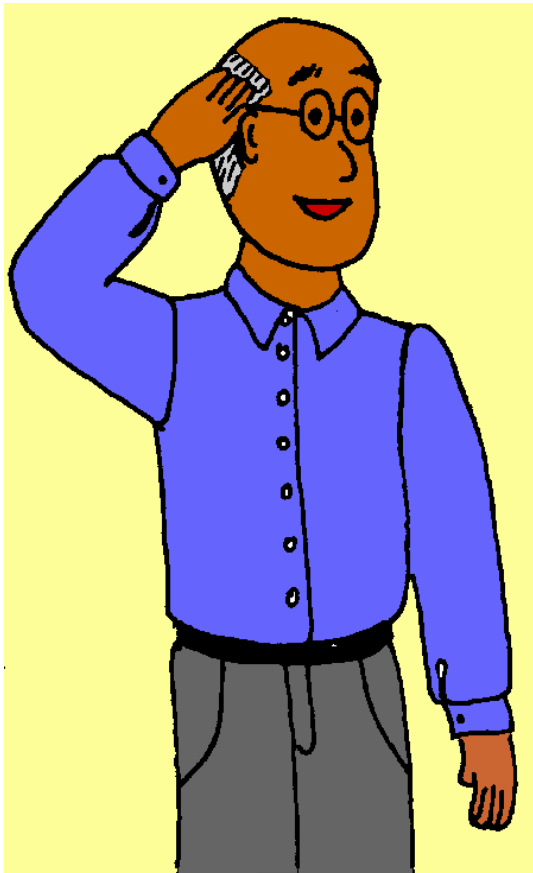
b



l c k

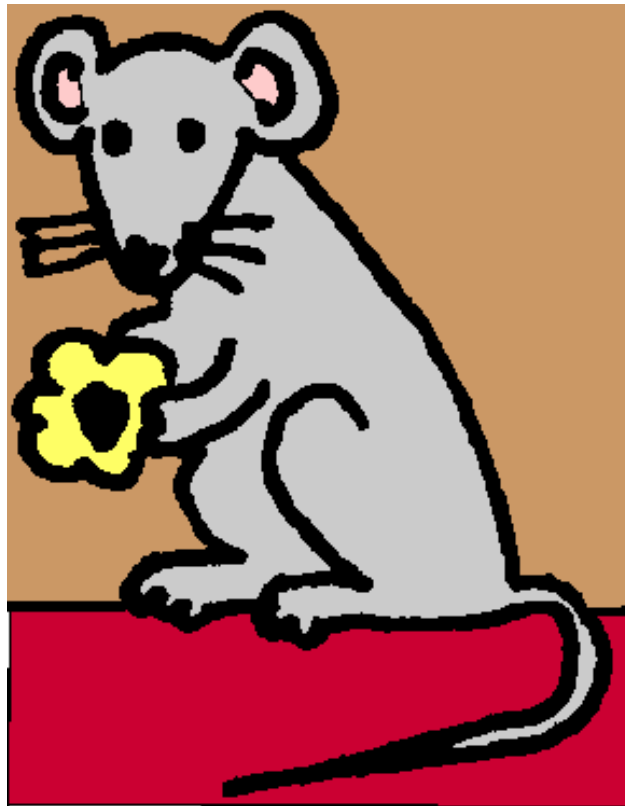


D d



E e

ea



E e

e e

e _ e

Name Brad

Spelling

A

ground

out

mouth

couch

flour

shout

mountain

loud

• •

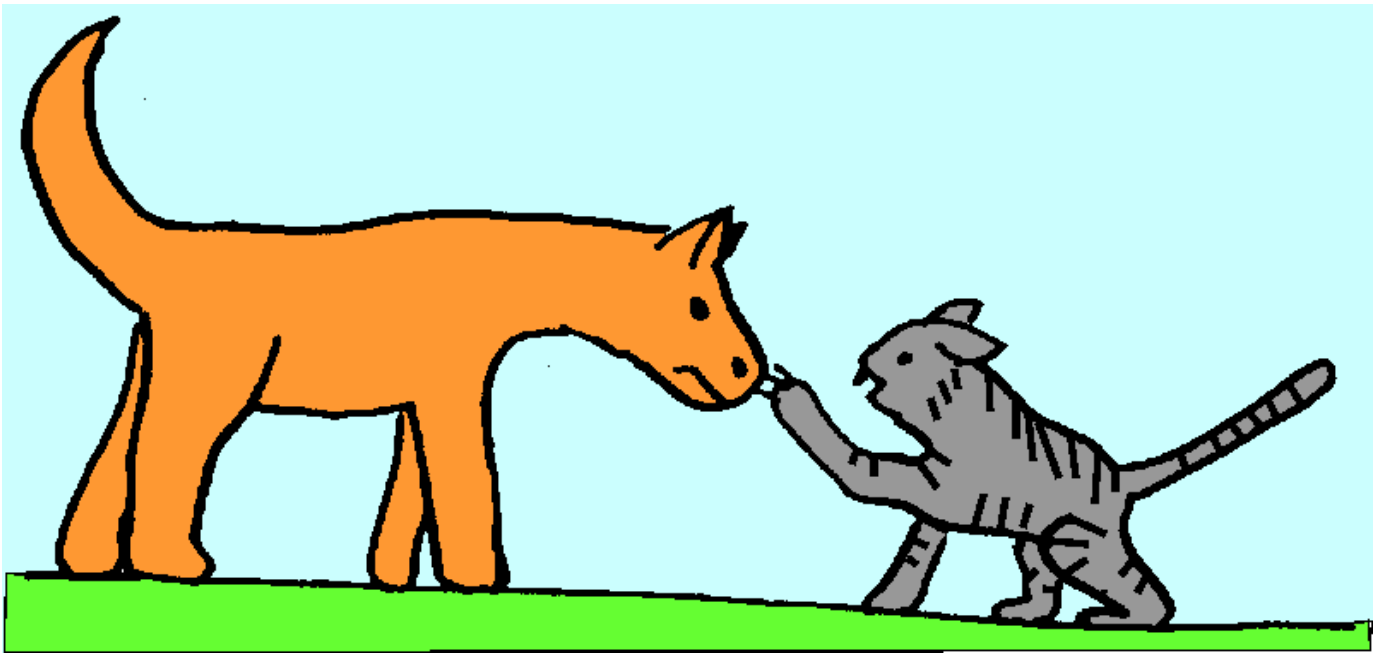
E

e • •

ei

ey

ea



F f

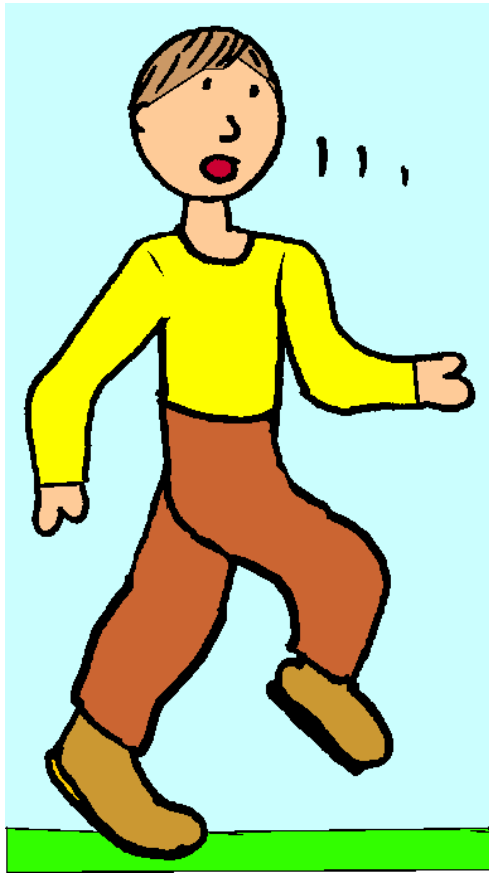
ph

_ ough



G g

gh



H h

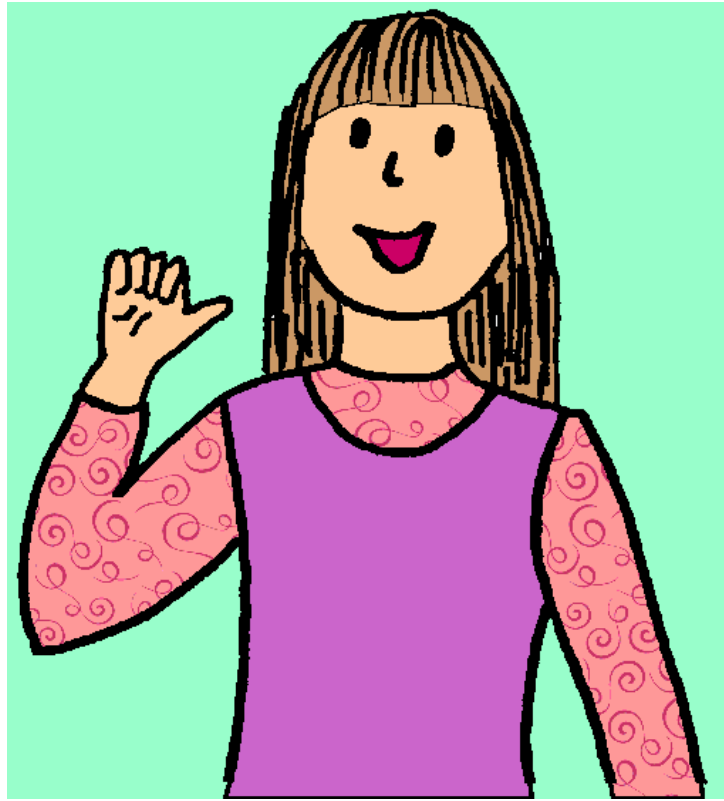
wh



I

i

y

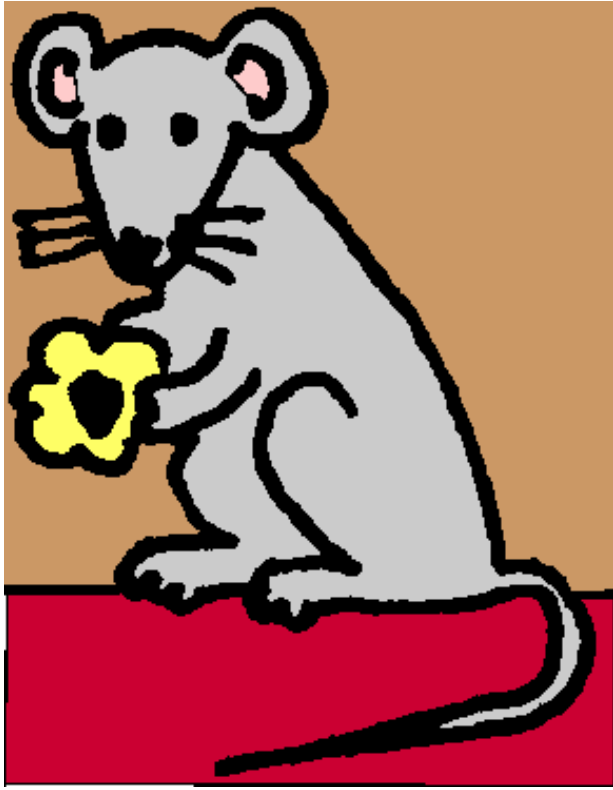


I

i

i _ e

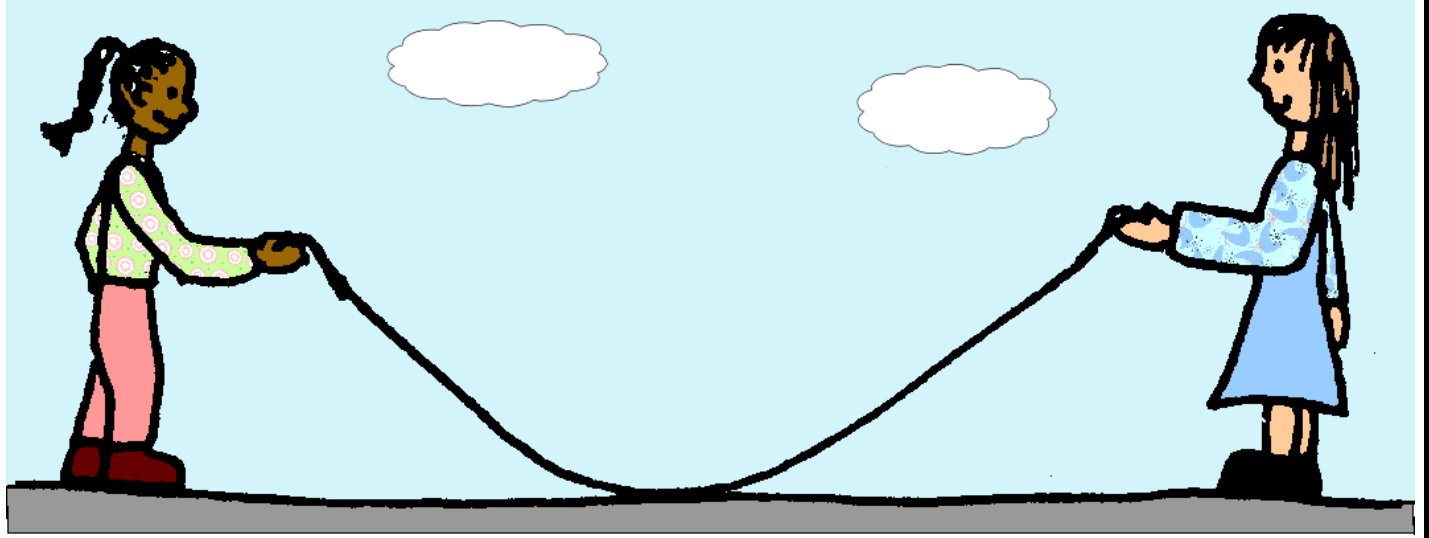
i e



i

i

ie



J j

— dge

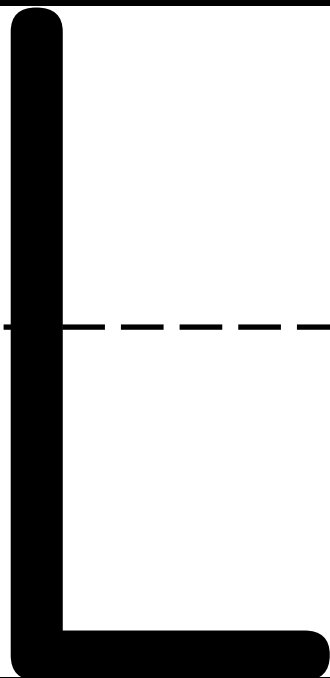
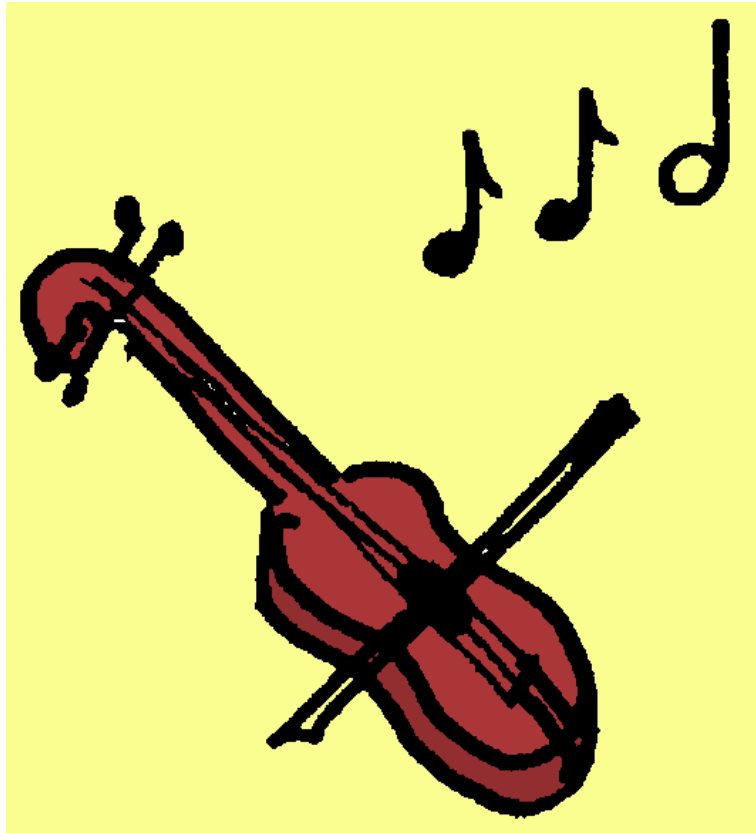
— ge

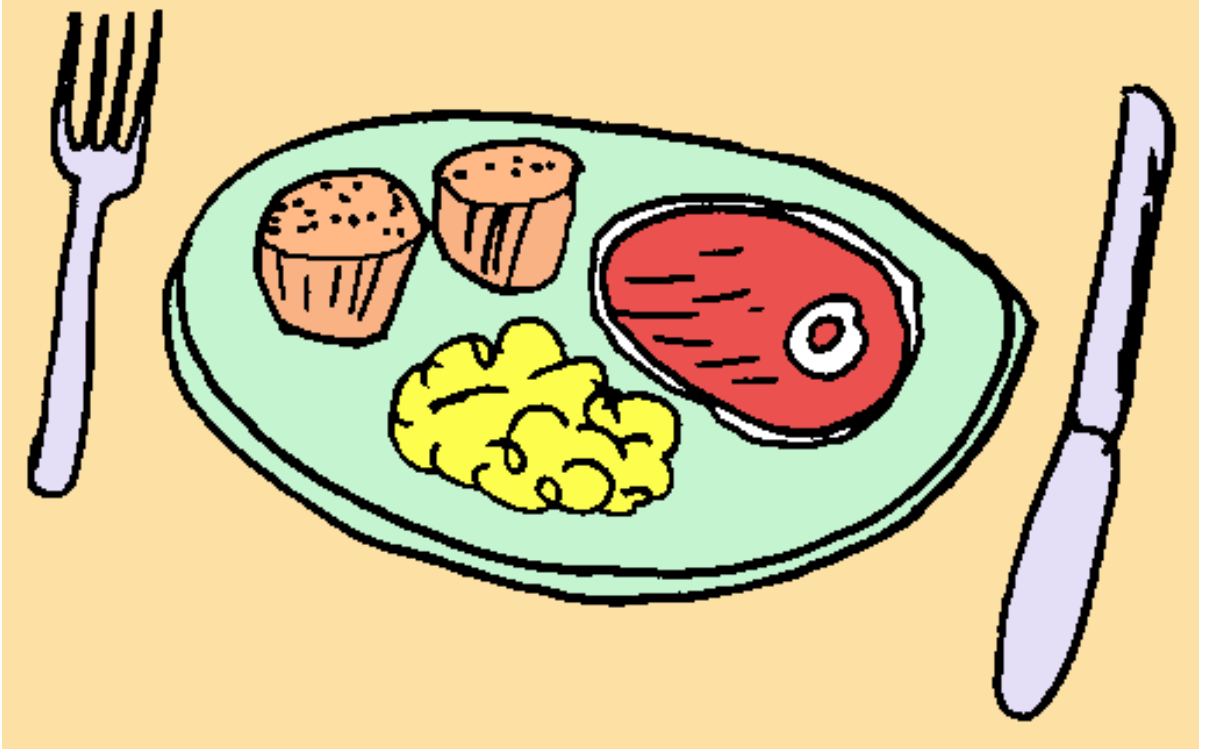


K

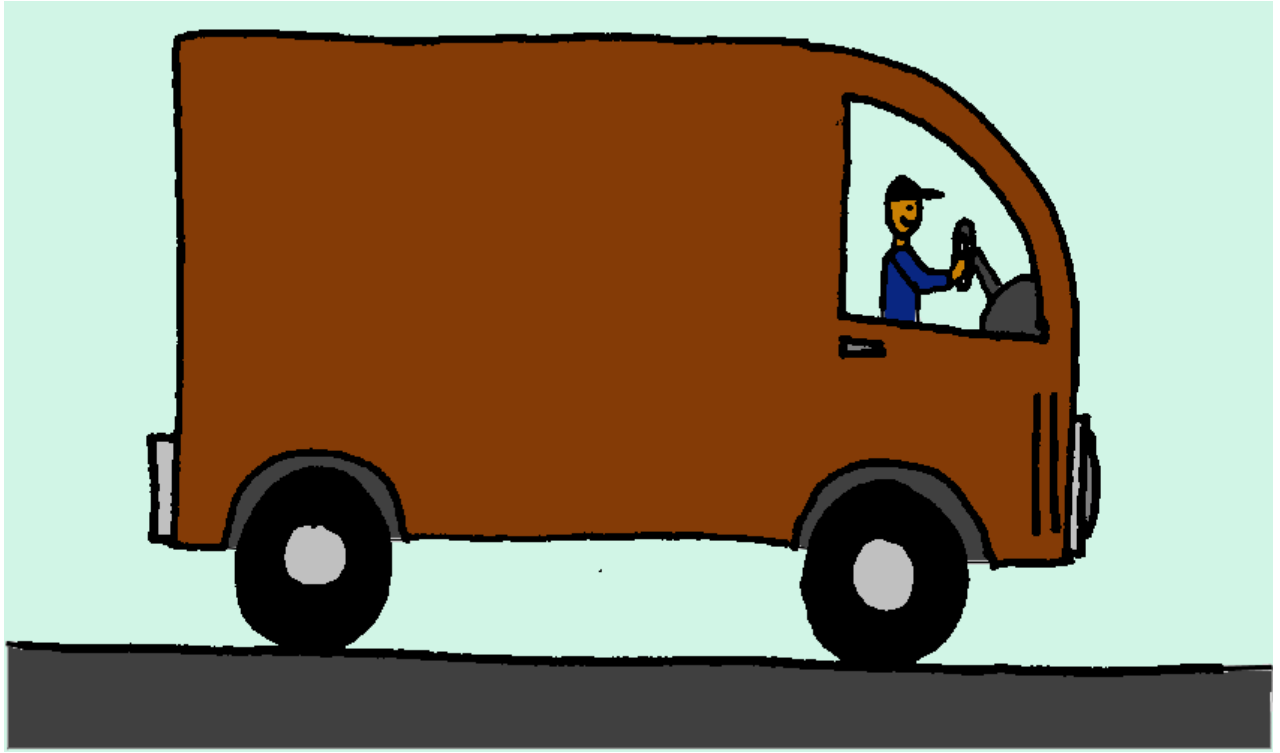
k

_ck



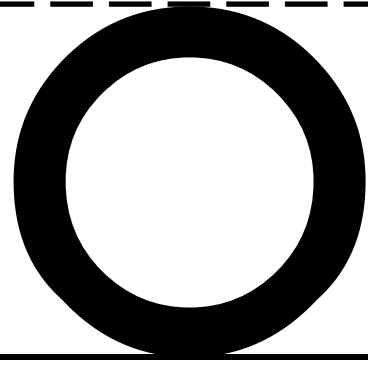
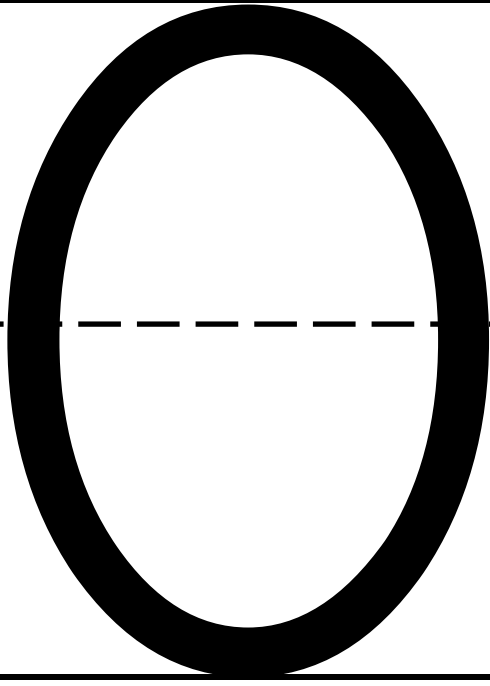
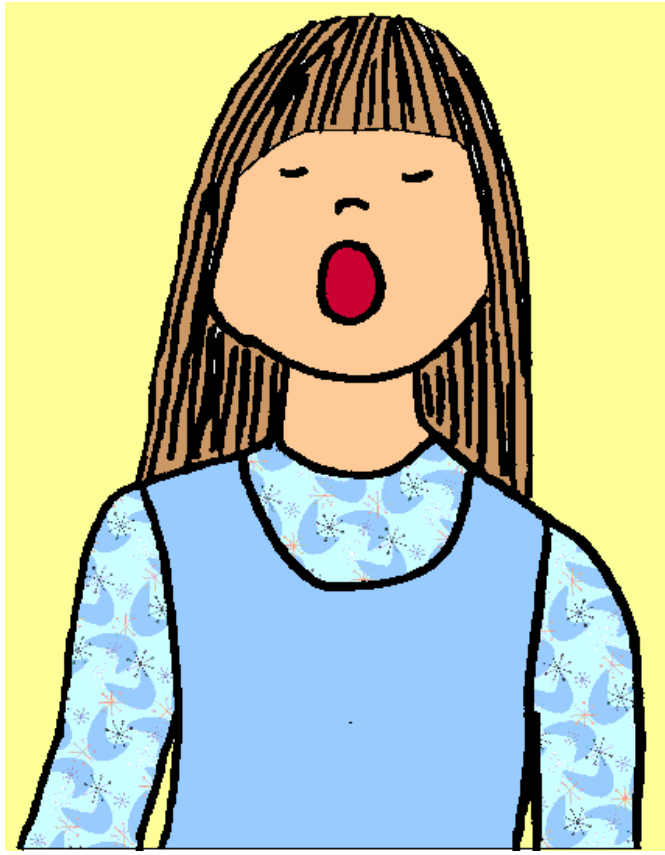


M m

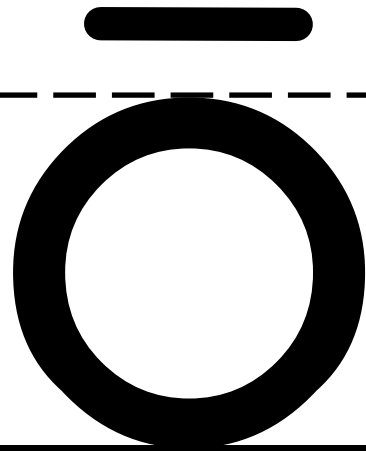
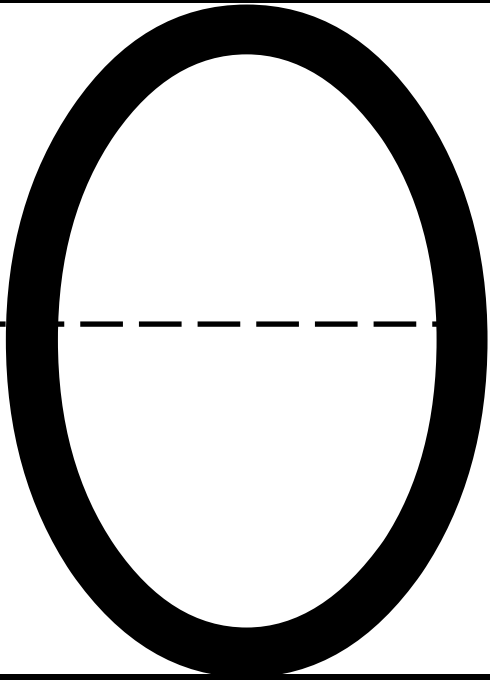
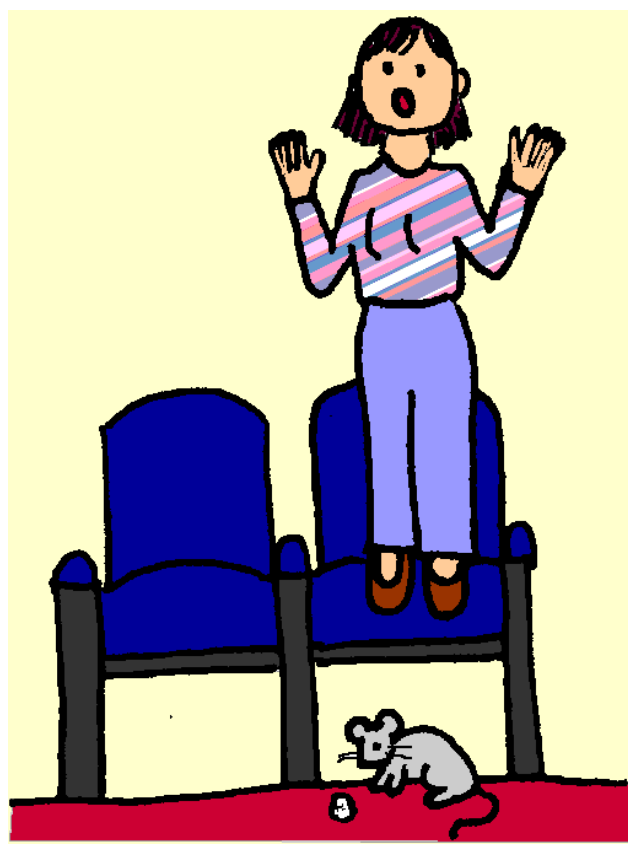


N n

kn



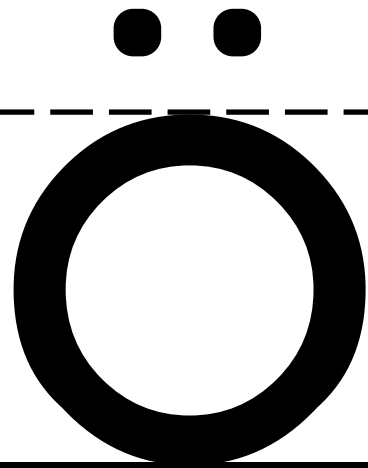
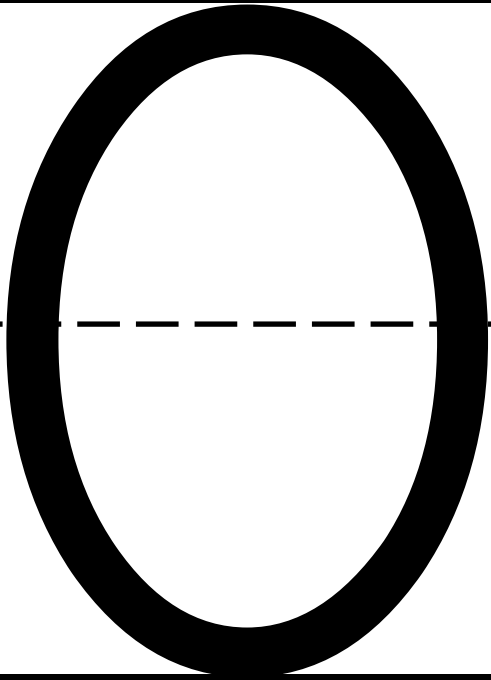
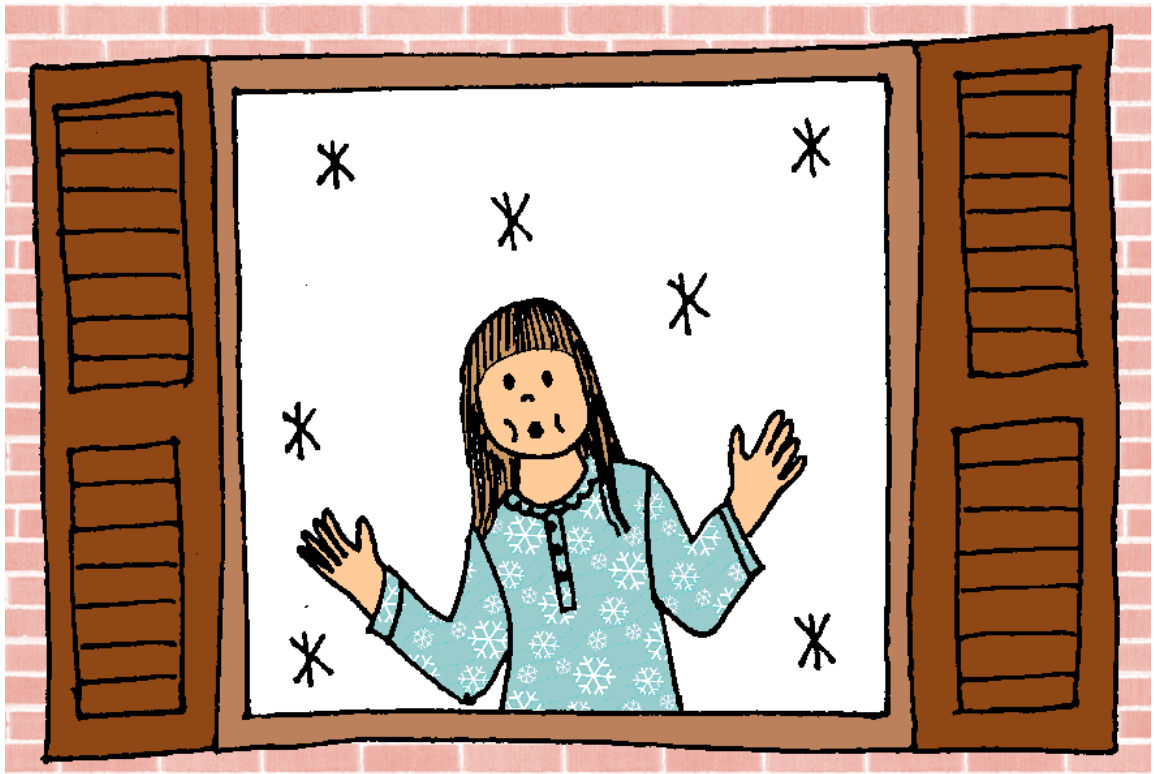
a



o a

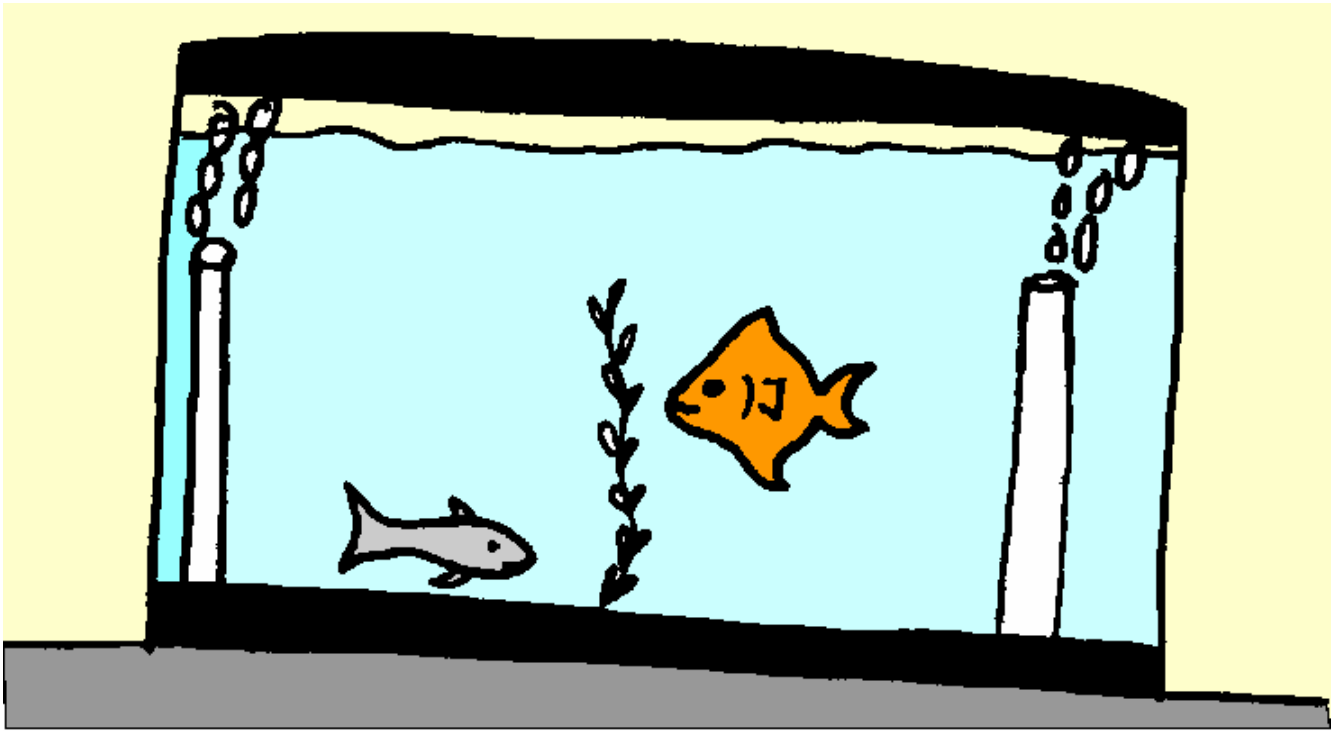
o e

o _ e



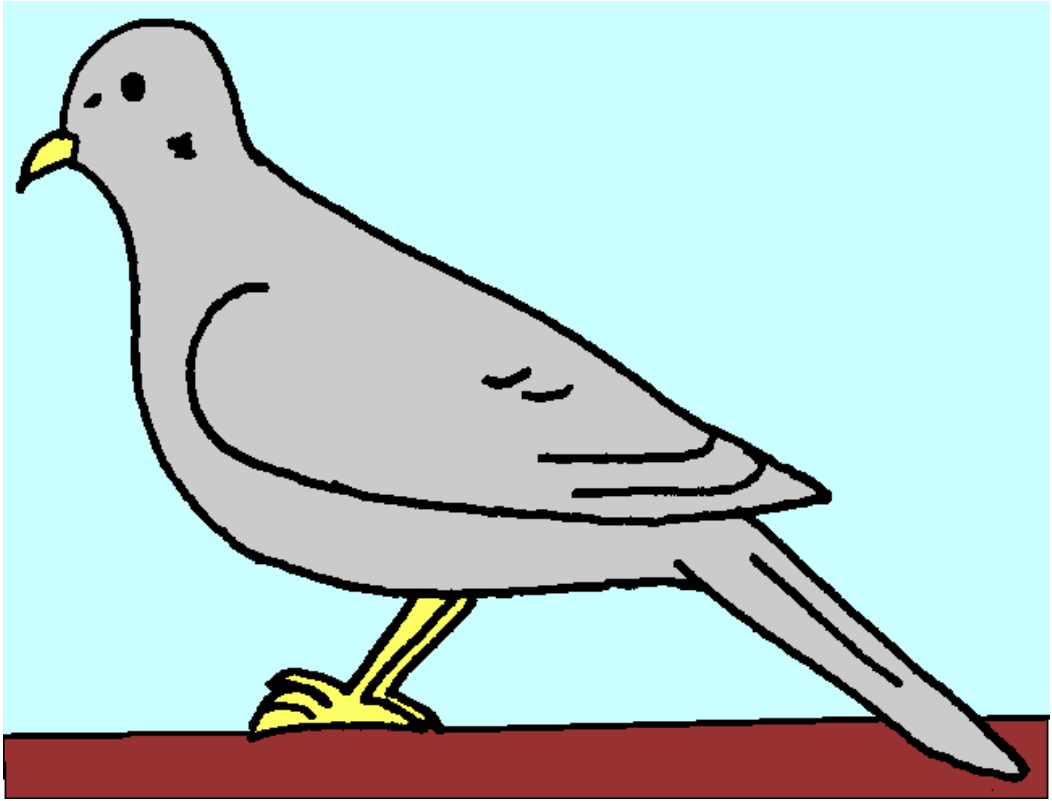
ou

oo

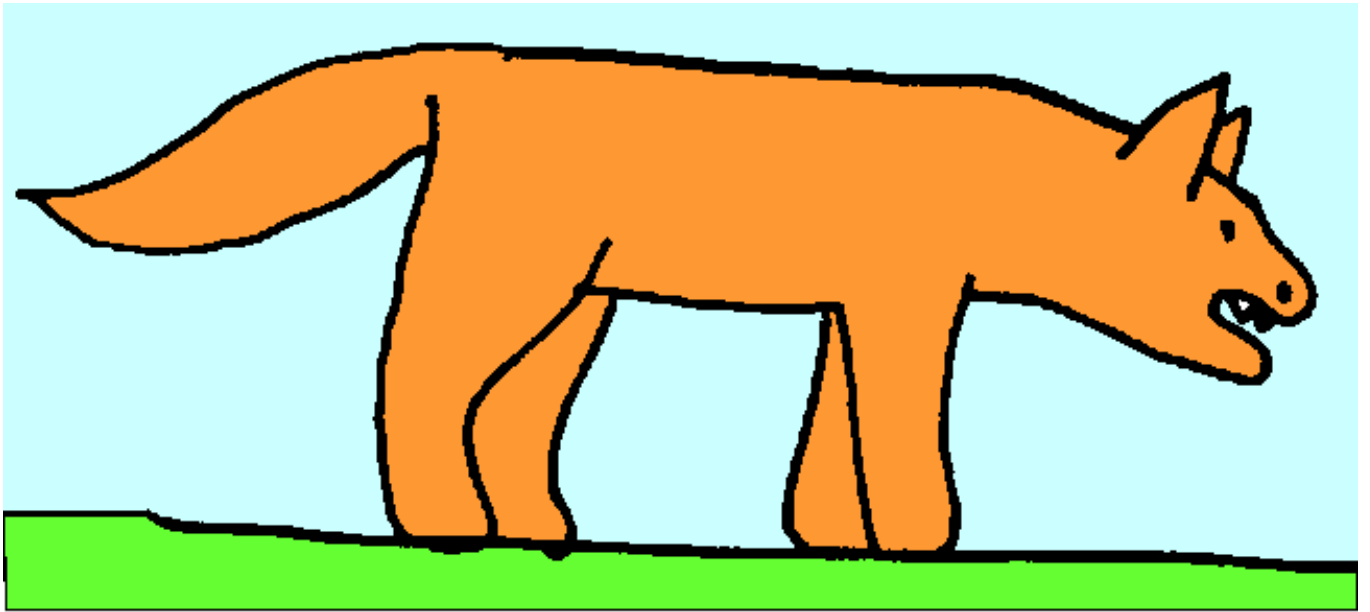


P

p



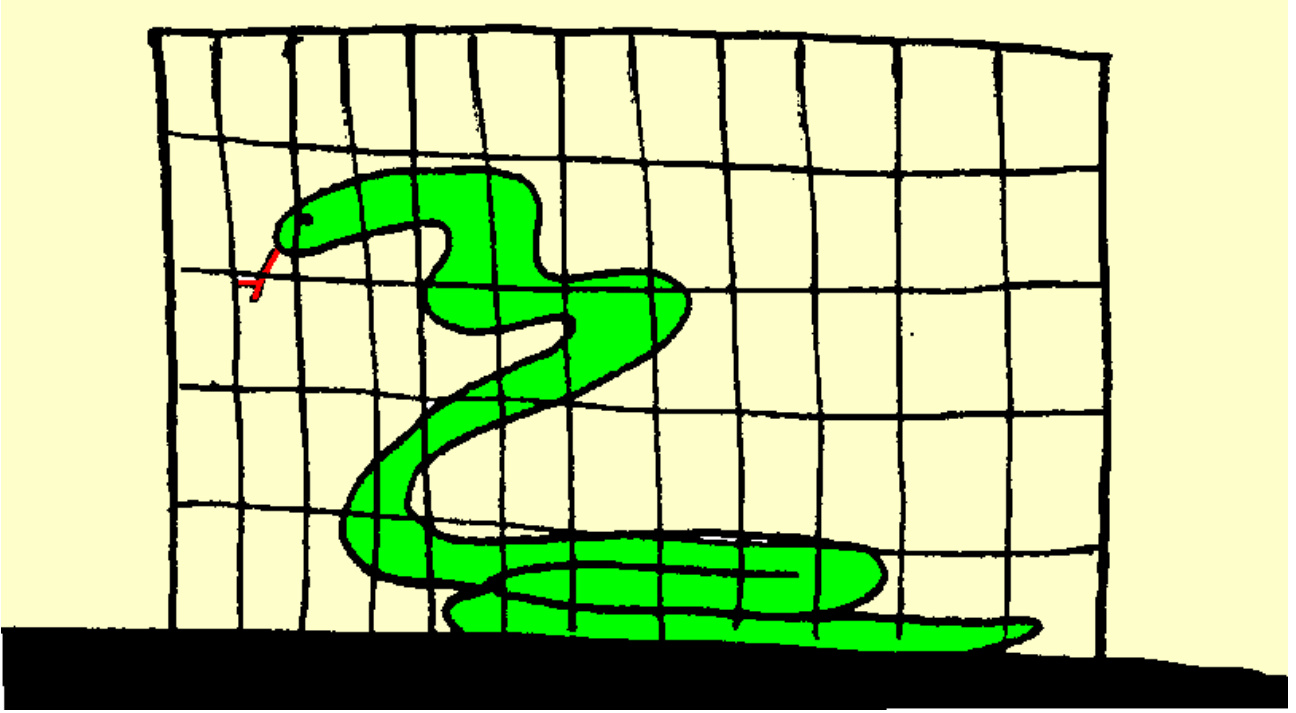
Q q u u



R

r

wr



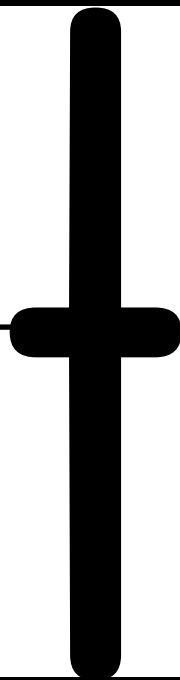
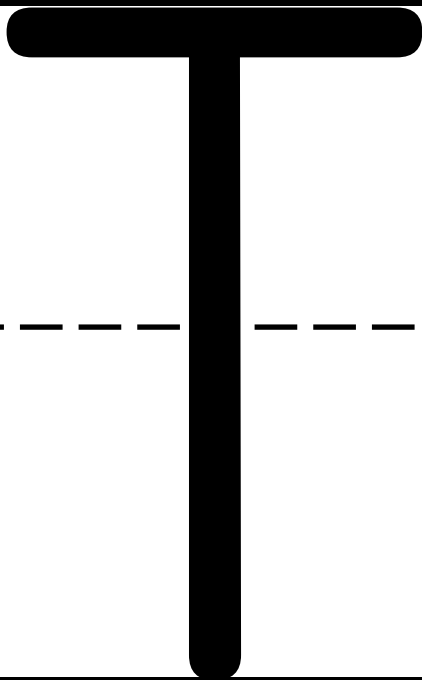
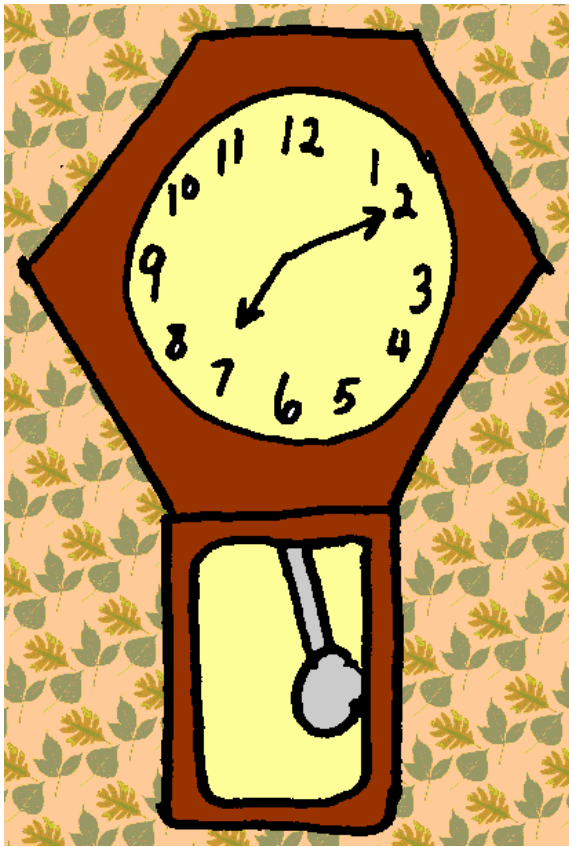
S

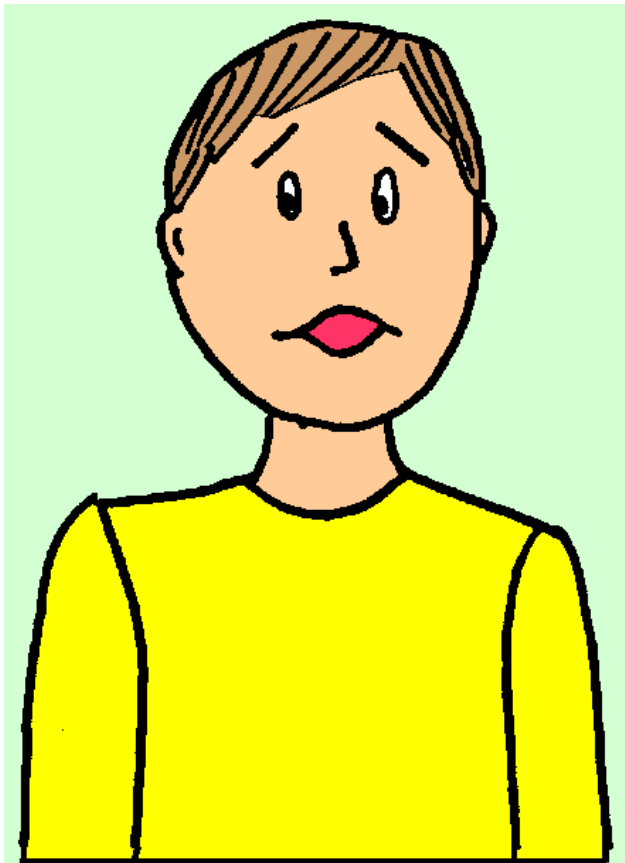
s

ce

ci

cy





U u



a

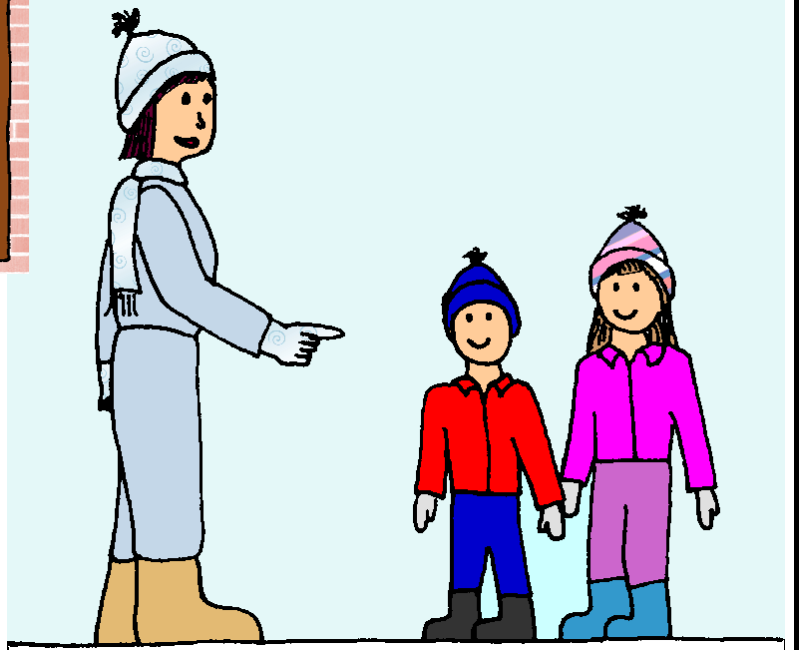
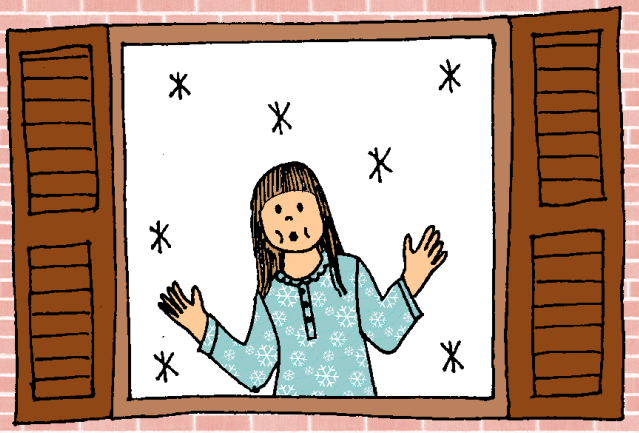


a



a





—

U

u

ui

ue

u_e



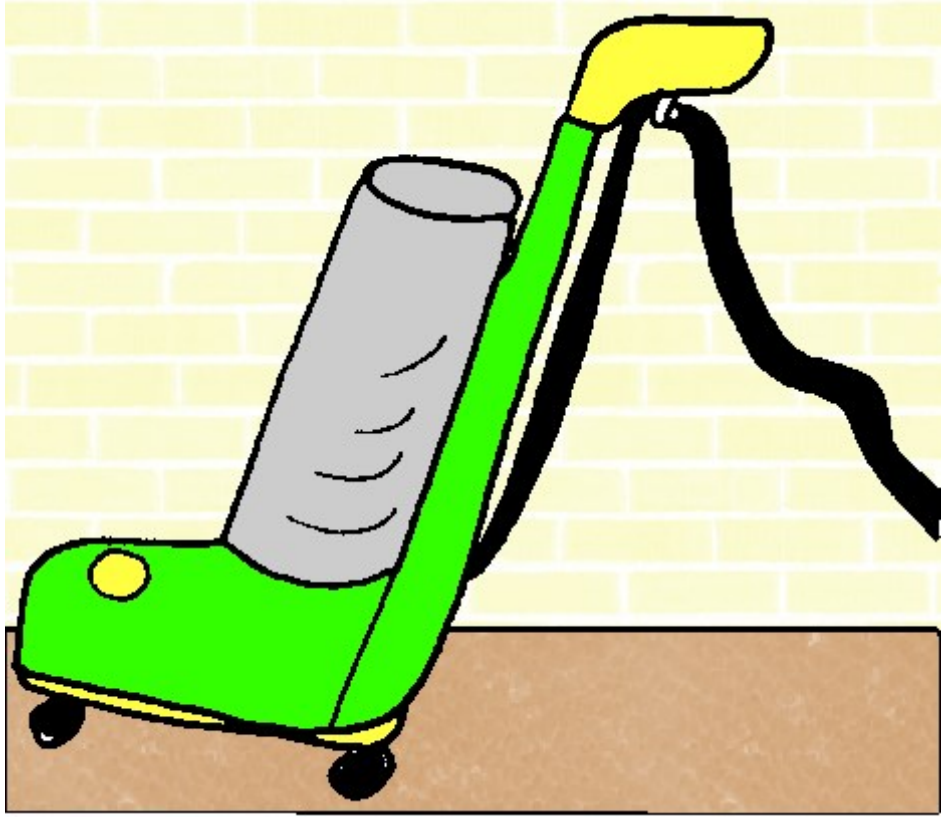
• •

U

ü

oo

ould



V

v

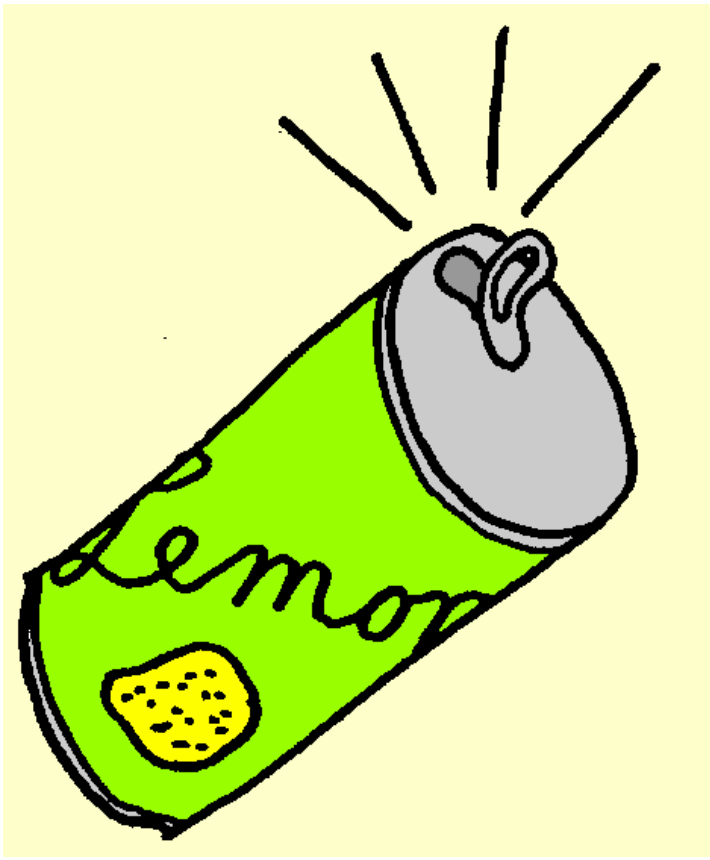
—ve



W W

w w

wh



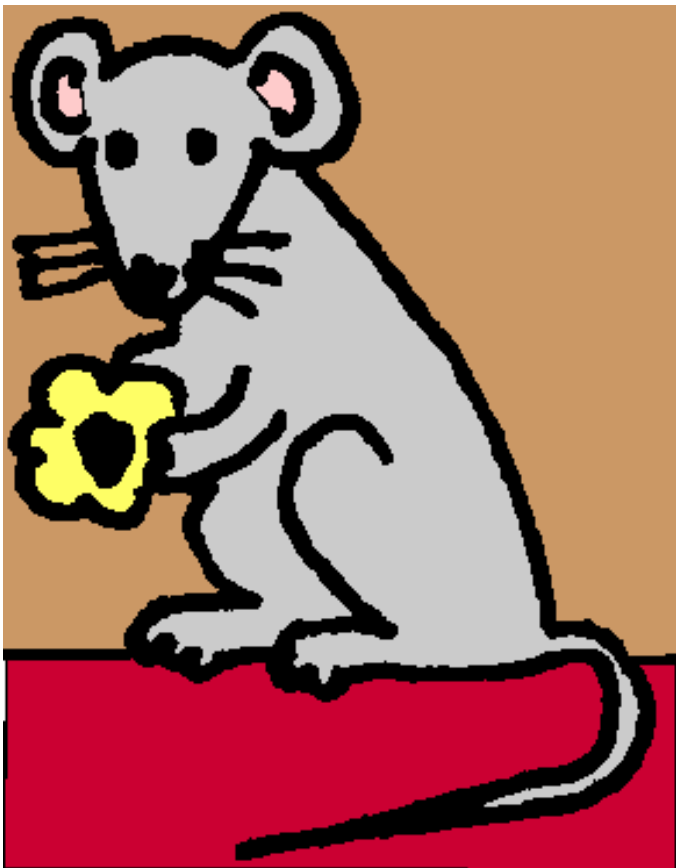
X

x



Y

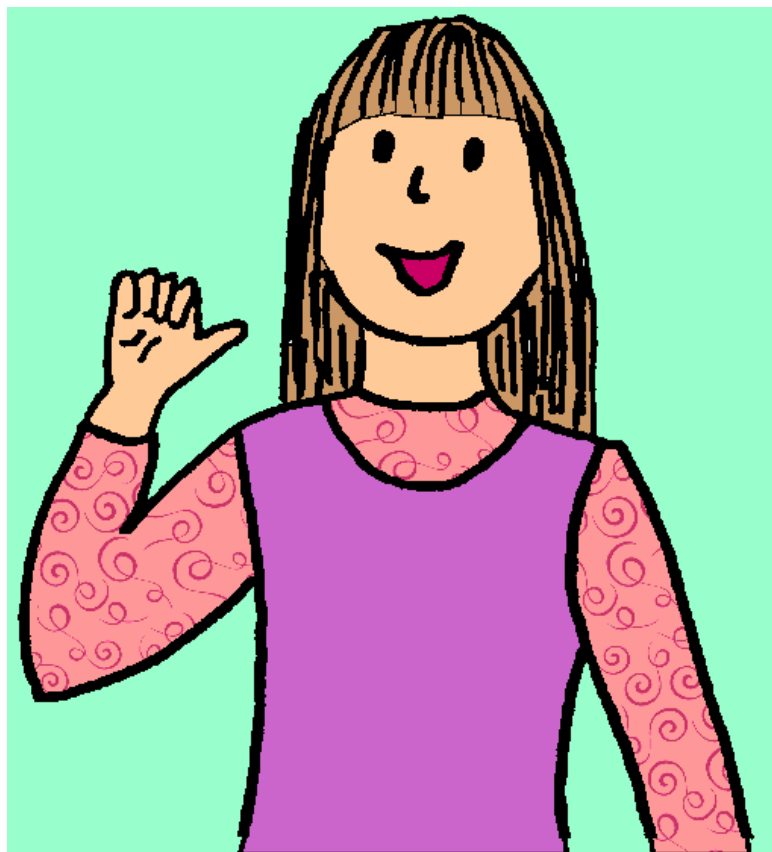
y



Y

y

ei

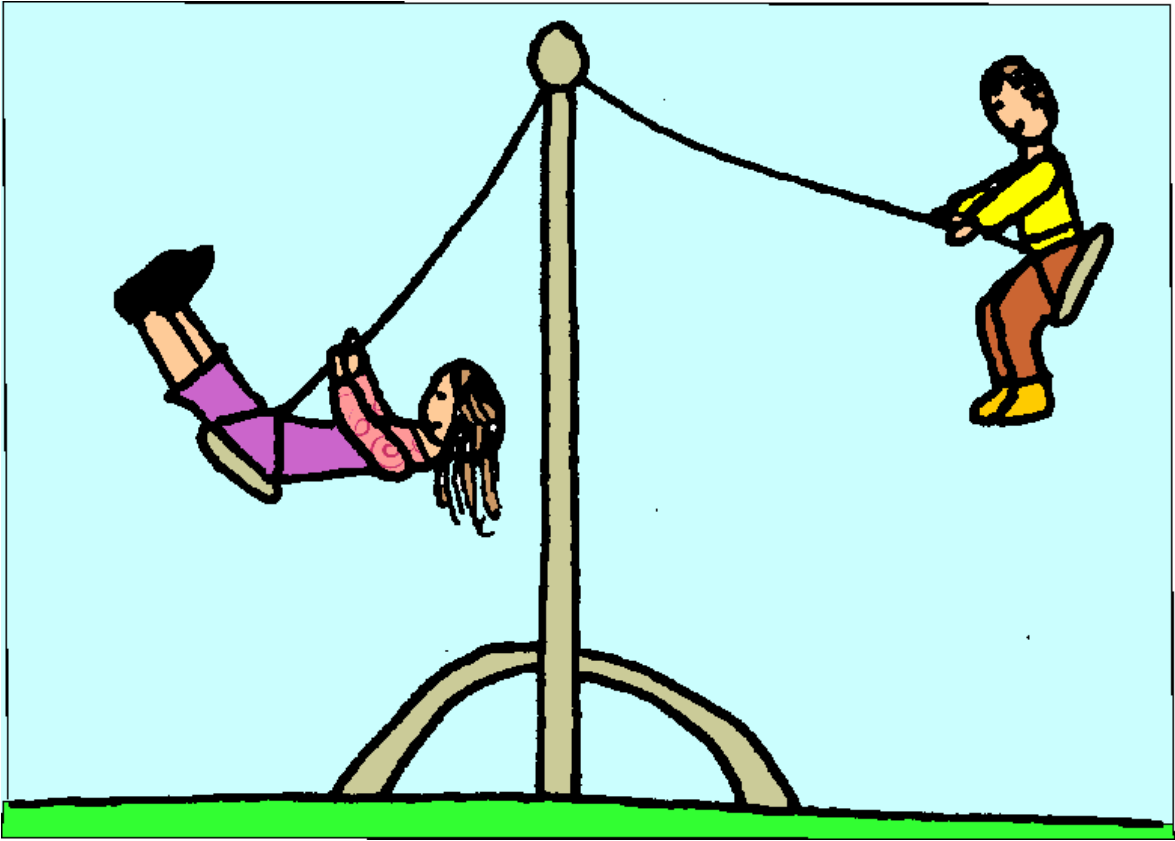


Y

y

ye

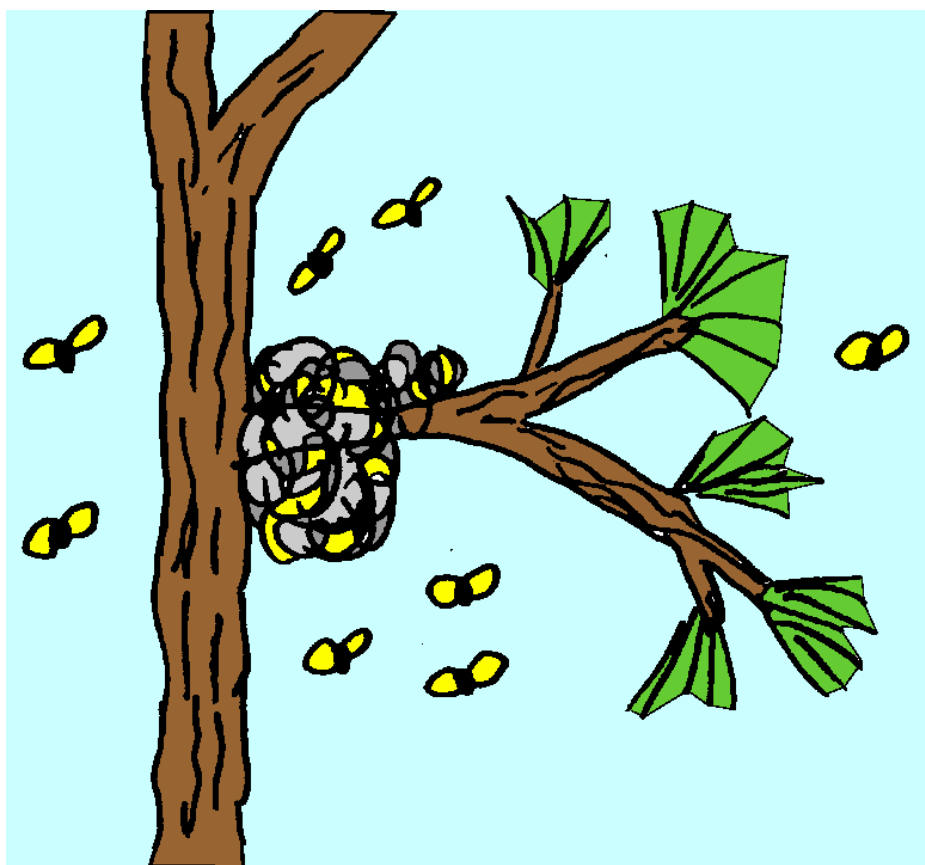
y_e



Y

y

i



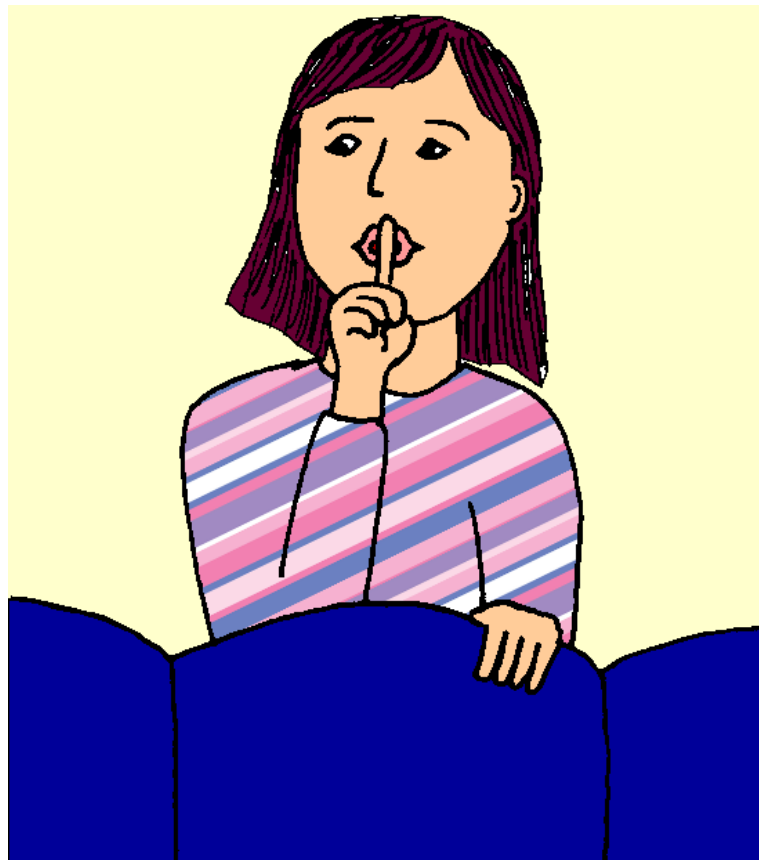
Z

z

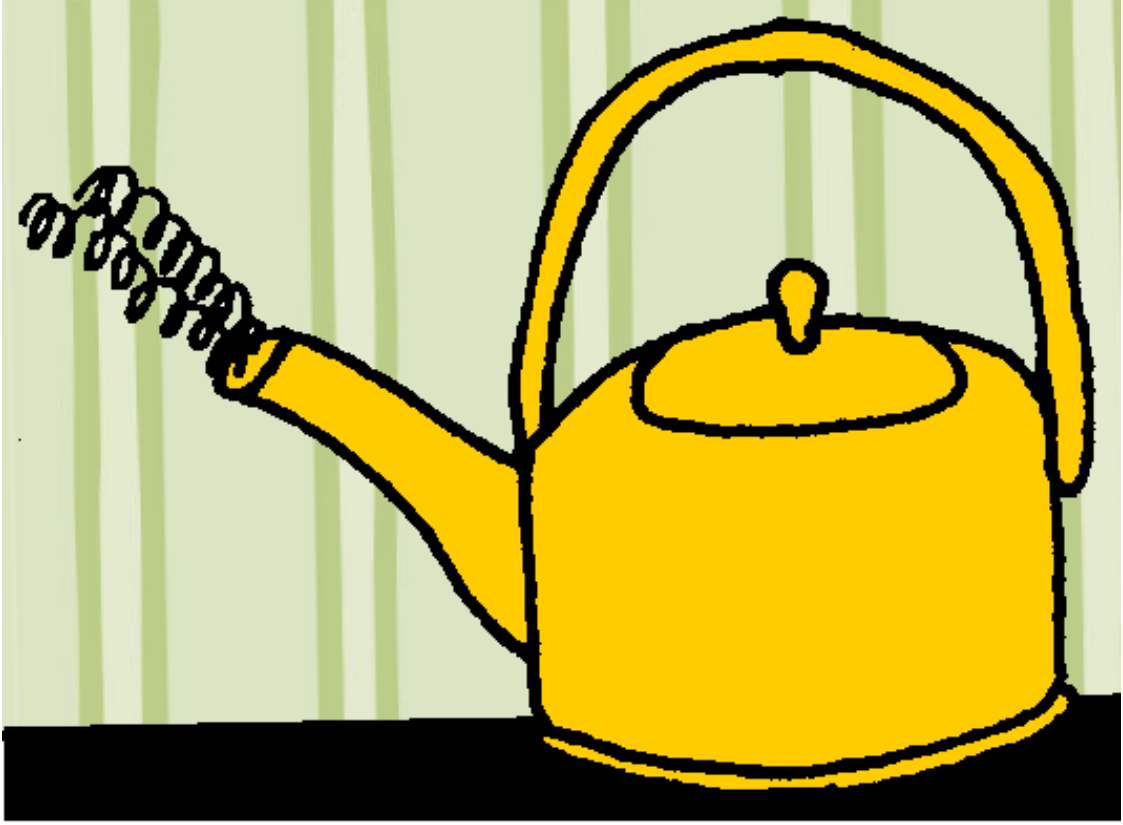
s

— se

— ze



s h



t h

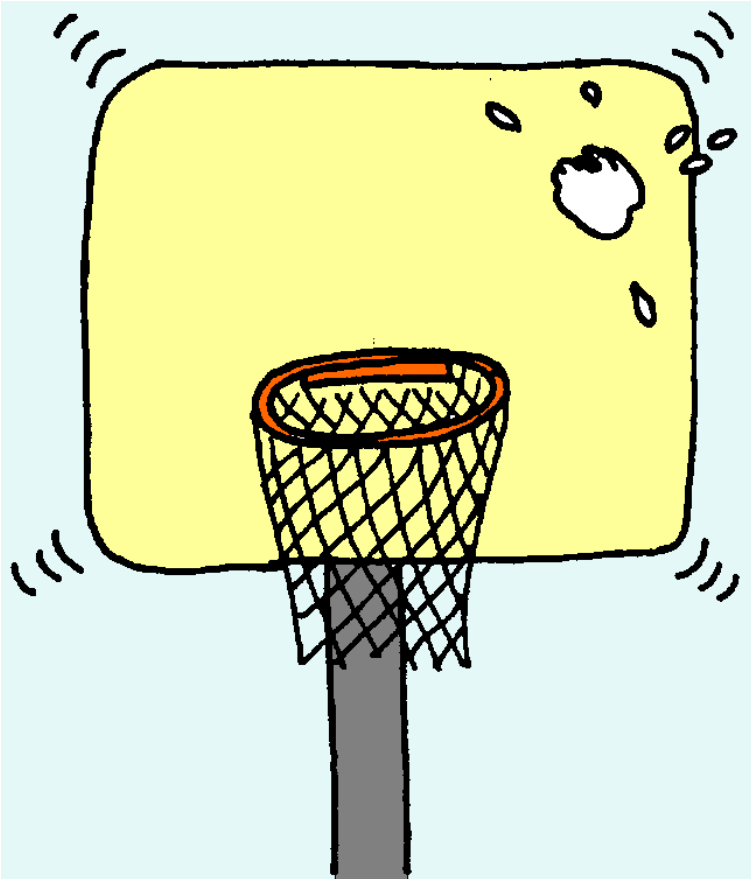


t h



ch

— tch

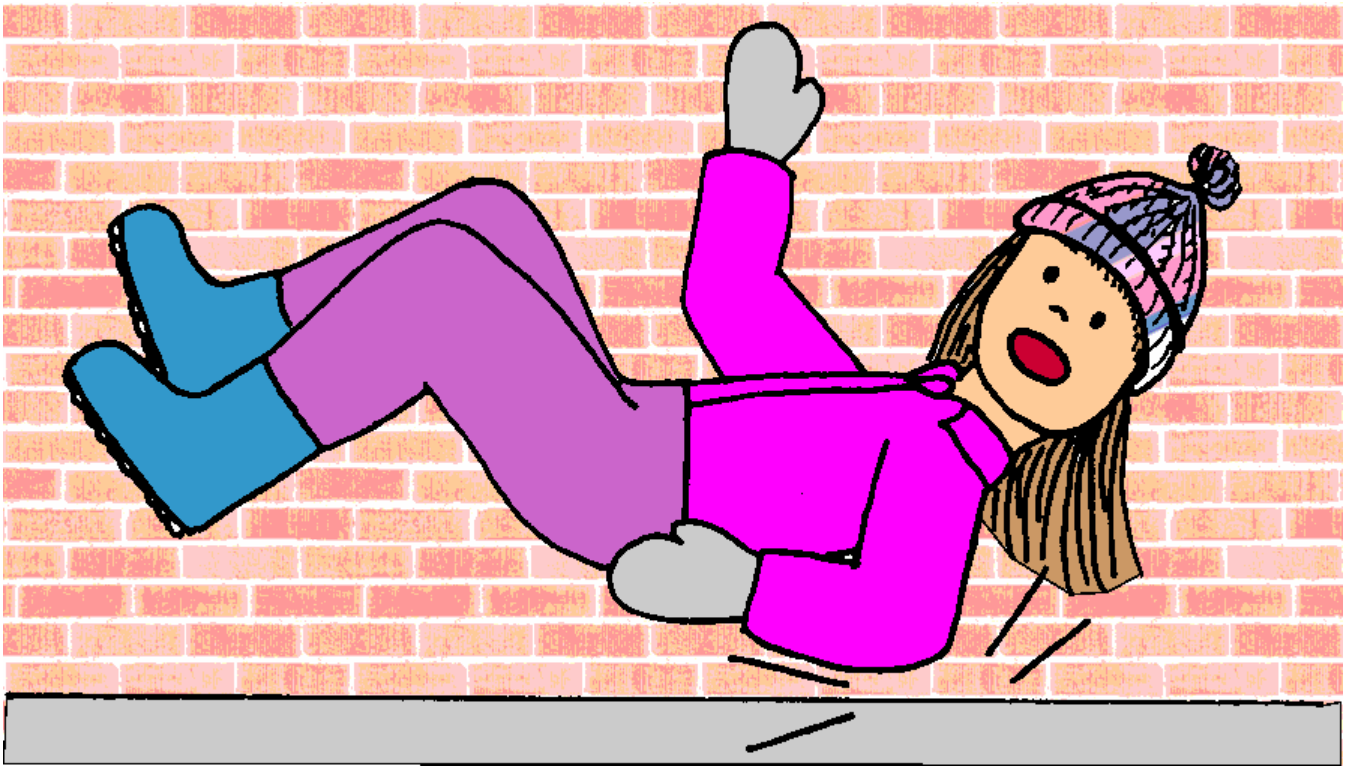


ng



oi

oy



ow

ow



vision

measure

azure

garage

Note 1: The small boxes at the bottom of some of the pages show alternate phonics patterns that represent the same sound. In some cases, there are too many alternate patterns to fit at the bottom of the page. Additional patterns are included on this page and on the following pages, as needed. The extra patterns should be added to the bottom of the designated charts.

Note 2: The pictures shown on the charts come from *A Sound Story About Audrey And Brad*. You can listen to the sound each picture represents by listening to the sound story at www.soundcityreading.net. The pictures are not used as key word pictures, which typically represent the beginning sound for a given key word. The pictures represent spoken or environmental sounds that occur in the sound story. For example, the picture of a black bird for the dotted ä sound does not show the b/bird or c/crow sound. It shows the sound of the crow's call: "aw."

More dotted ä patterns. Attach to the bottom of the dotted Ä ä wall card when these patterns are introduced.

all

al

alk

wa

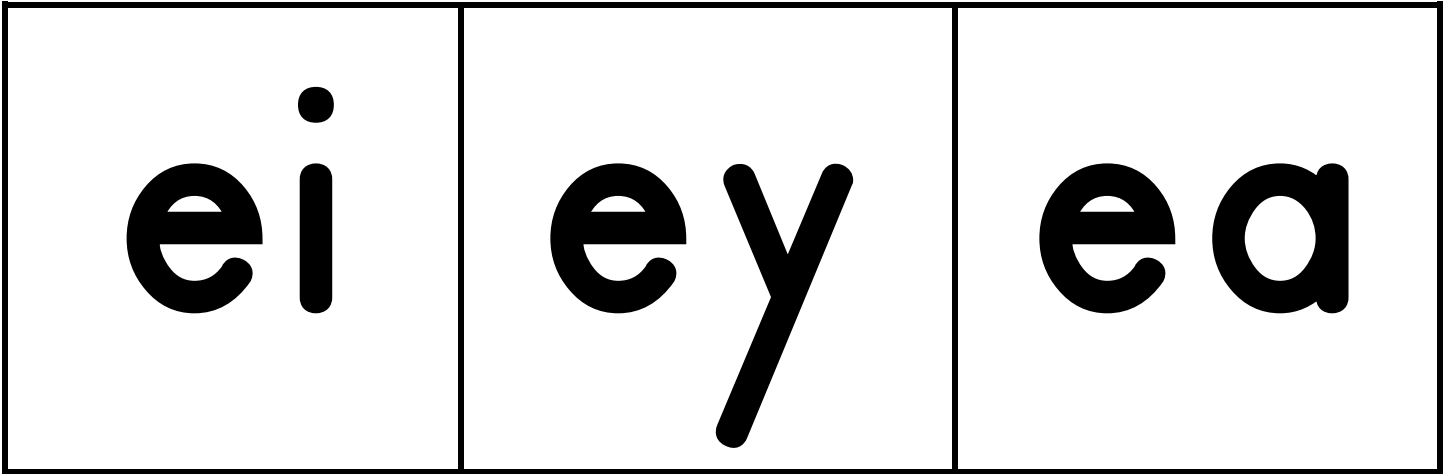
swa

qua

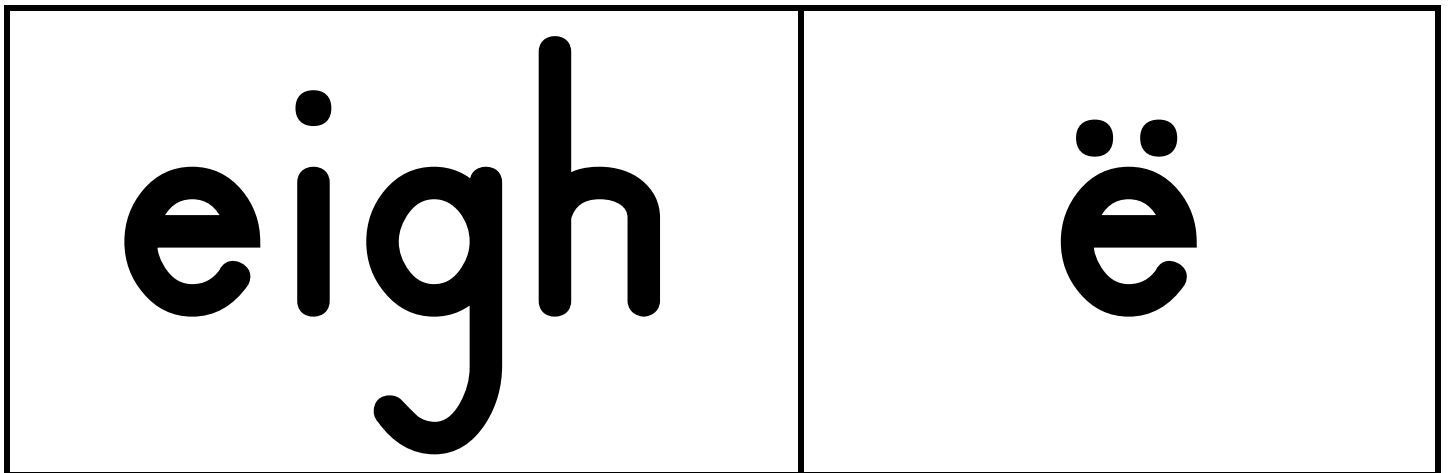
squa

ought

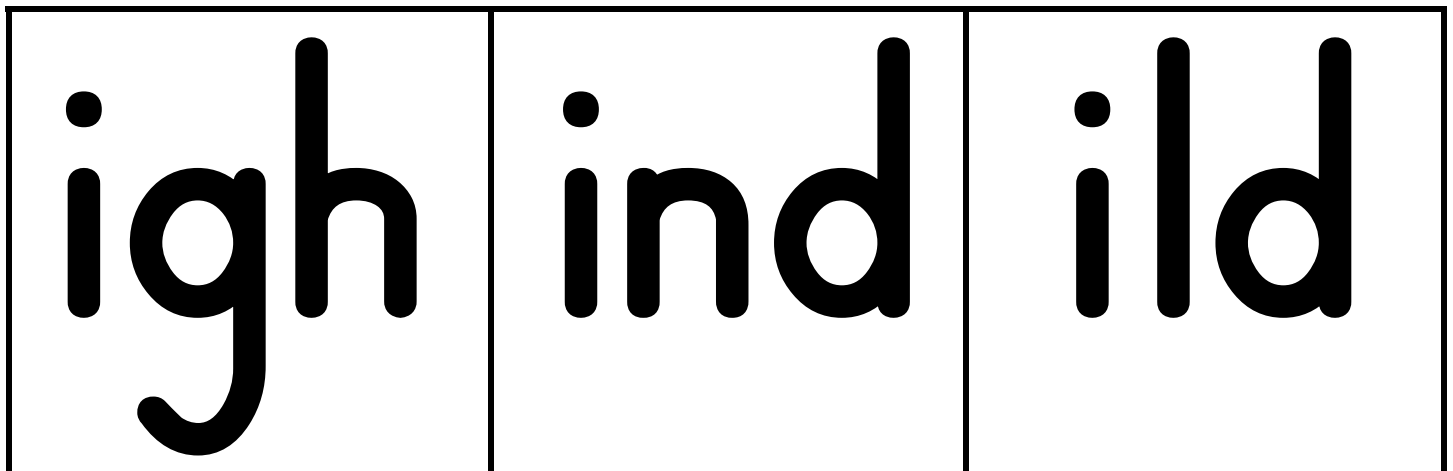
More long ē patterns. Attach to the bottom of the Ē ē wall card.



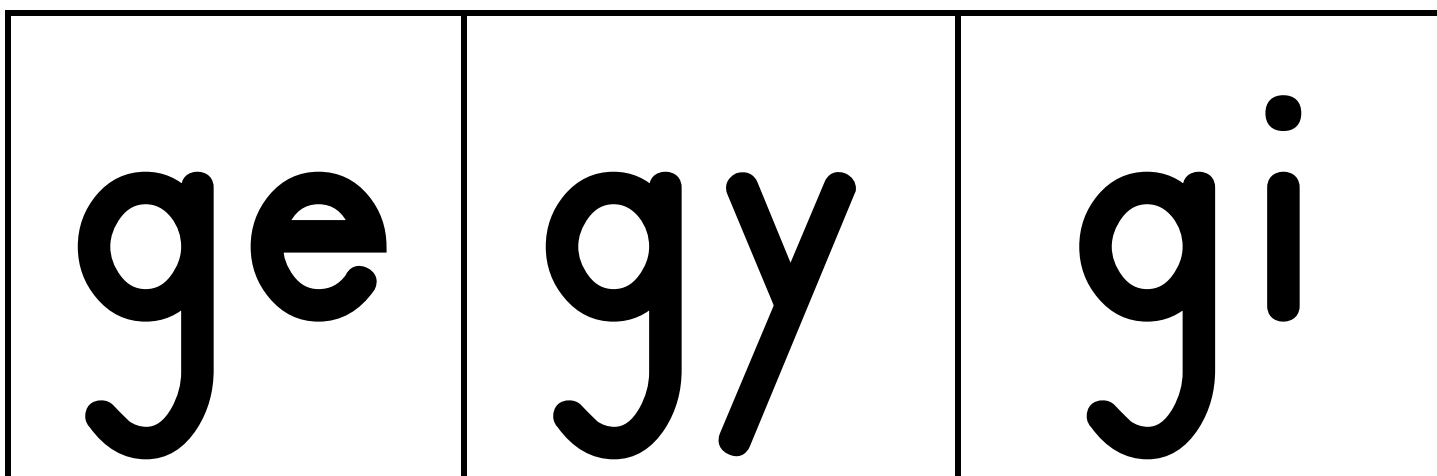
More dotted ë patterns. Attach to the bottom of the dotted Ě ë wall card.



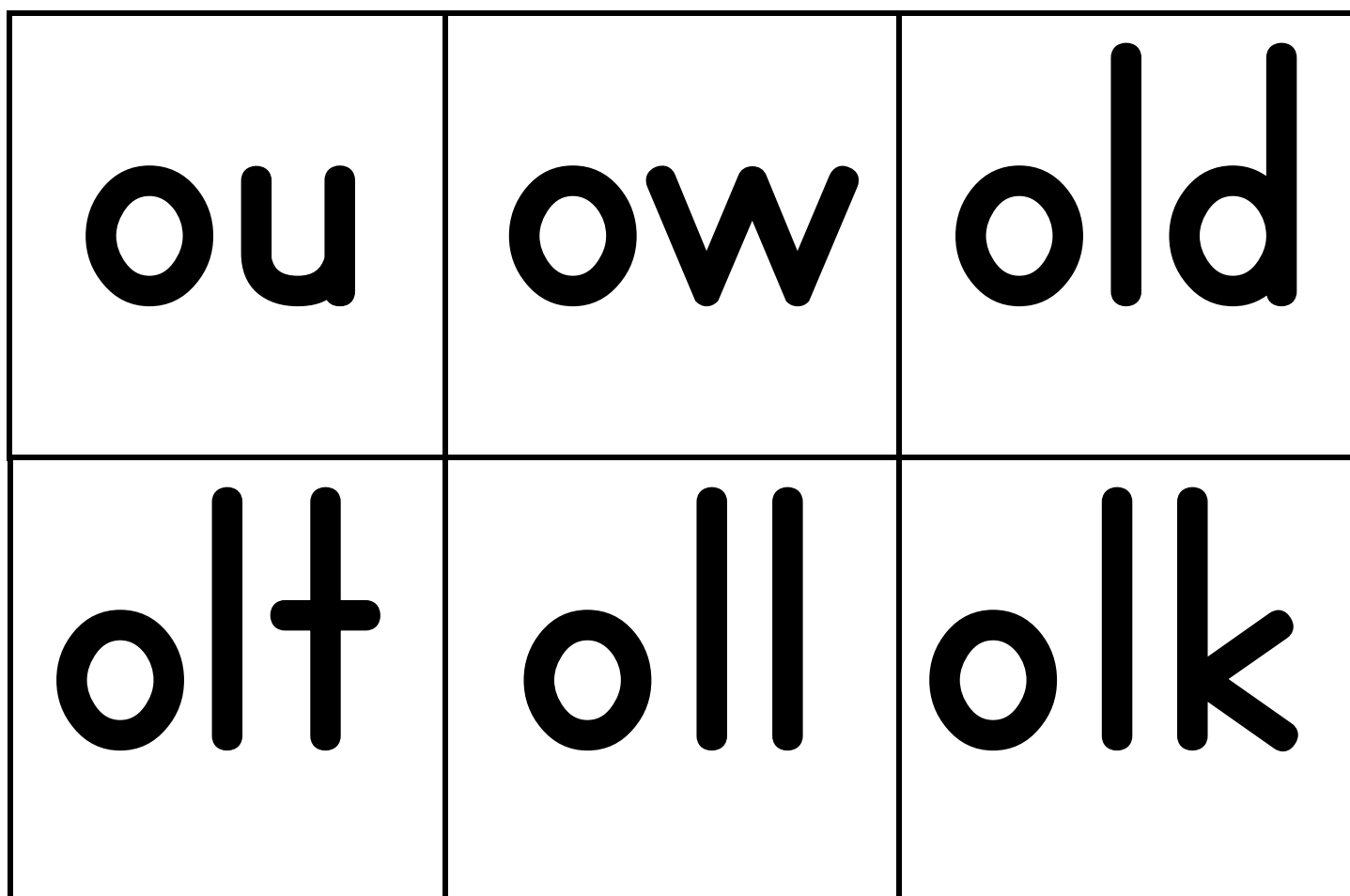
More long ī patterns. Attach to the bottom of the Ī ī wall card.



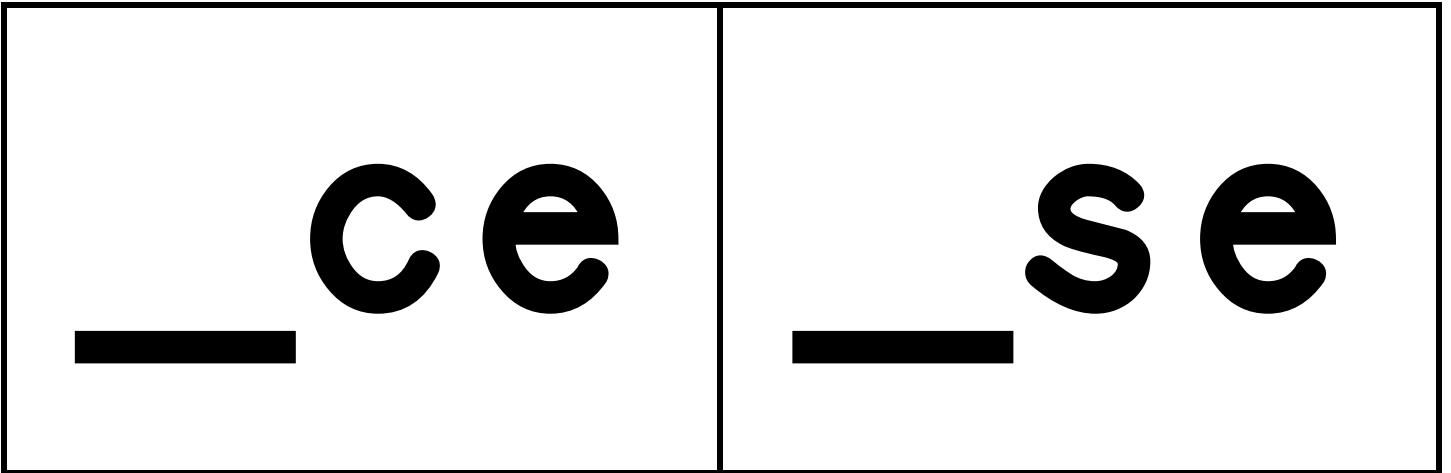
More patterns with the /j/ sound. Attach to the bottom of the J j wall card.



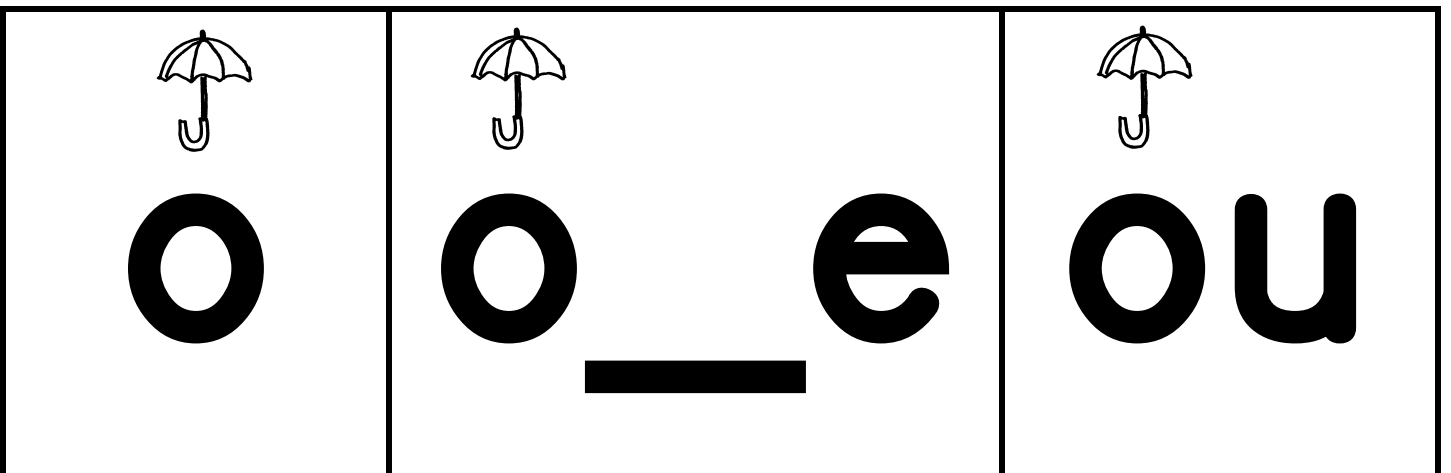
More long ō patterns. Attach to the bottom of the long Ō ō wall card.
Cover the ou and ow patterns until they are taught in Book 4.



More patterns with the /s/ sound. Attach to the bottom of the S s wall card.



More patterns with the short u sound. Attach to the bottom of the short U u wall card.



One more long ū pattern. Attach to the bottom of the long Ū ū wall card.
This is a rule breaker pattern because it does not begin with the letter u.

